

# *PondMAX*

WATERGARDENING TO THE MAX

## ALL-IN-ONE SF650

INSTRUCTION MANUAL



**888.868.1185**

**sales@pondmax.com**

**www.pondmax.com**

DATE  
MAR 2017

MODEL  
23PF312

**CONGRATULATIONS ON YOUR PURCHASE OF THIS PRODUCT BY PONDMAX, THE ANSWERS FOR YOUR WATERGARDEN MADE EASY.**

## TECHNICAL SPECIFICATIONS

Frequency	Voltage	Power Consumption*	UV-Clarifier Power	Max Head	Water Flow	Cable Length	Outlet Ø (Inch)
60 Hz	115 Volt	57 Watts	13 Watt	8 Ft.	660 GPH	30 Ft.	1/2", 3/4", 1"

\* SUBJECT TO VARIATION ACCORDING TO LOAD.

## BENEFITS

The PondMAX All-In-One SF650 Filter System is designed to clean ponds and water features utilizing the latest technology as follows:

- Mechanical & Biological Filtration
- 13 Watt Ultraviolet Clarifier for prevention of unsightly organic matter.
- Powerful 660 GPH pump with wear resistant components.
- Dual Flow Control T-Piece
- Multiple fountain nozzles help aerate water.
- Low-Voltage Power System for safe in-pond operation.



## IMPORTANT SAFEGUARDS

Please read the operating instructions and familiarize yourself with the equipment before placing it in service. Correct and safe use of the system requires strict compliance with the safety instructions.

**Any damage of the equipment or unmerited operation will bring dangerous UV Rays to the skin and eyes. So if there is any damage of the equipment, it must not be used. The equipment should always be out of reach of children.**

For your safety, disconnect from the power supply before any maintenance of any equipment in pond is attempted.

Be sure the equipment is submerged completely in the water. The depth should not be greater than 3ft.

Do not operate the pump if the appliance or any component of the system, such as power cable, have been damaged.

For safety, always plug the pump into an electrical outlet with a (GCFI) Ground Fault Circuit Interrupter.

To avoid an electric shock, do not attach the plug to the power supply socket with wet hands. The drip loop method should be used to prevent water from traveling down the cable and onto the plug or power supply. If the plug does get wet, do not unplug the cable. Disconnect the circuit breaker that supplies power to the power supply point. Then unplug and examine the plug and power supply point for presence of water. If the power point has become wet, you should consult an electrician before using the power point again.

Always unplug the pump from the power supply when not in use or before performing any maintenance on the pump or in the pond. Never pull the cable to disconnect the plug from the power supply. Grasp the plug and pull firmly to disconnect.

Always unplug the appliance from the power supply when not in use or before performing any maintenance.

If required, have a qualified electrician install a weatherproof power supply near the pond or water feature (within the cable length of the SF650).

Do not install or store the unit where it will be exposed to extreme hot or cold temperatures. Do not use in water temperatures that exceed 95°F.

Do not cut the cable as this may result in voiding your warranty.

Care should be taken to arrange the power cable so that it cannot be accidentally tripped over or pulled.

Do not attempt to repair the electrical appliance yourself. Return to a PondMAX authorized dealer or original place of purchase if a fault occurs, (regular maintenance is not considered repair and is required by user).

# SF650 ALL-IN-ONE FILTER KIT

## PRODUCT SPECIFIC SAFEGUARDS

Do not look at a unshielded UV Clarifier bulb. Ultraviolet light is harmful to your eyes and may cause blindness. Do not operate UV bulb out of the plastic housing.

As the UV Clarifier bulb and quartz sleeve are made of glass, please avoid sudden movement or rough handling, as this could potentially break the glass.

In cold temperatures where frost or freezing may occur, please cease to use the unit. Remove from the environment. Frozen water will crack the quartz sleeve.

---

## INSTALLATION

Once a fountain nozzle has been selected, assemble the fountain kit as per the diagram later on in this manual. First screw the T-Piece onto the pump outlet (1/2" male threaded adapter) and adjust the telescopic riser to the desired height and align vertically for even water flow. On the dual-control flow adjuster, on the T-Piece, you can restrict flow from pump to both the fountain nozzle or the optional waterfall outlet. Close the second outlet of the T-Piece if this is not required for an optional waterfall.

Position the device in the pond or water feature horizontally, on a solid base free of sludge and debris, in such a manner that the filter cover of unit is completely covered with water but the fountain kit protruding out of the water.

Now go ahead and firmly plug the power cable into the nearest electrical outlet, supplied with a (GCFI) Ground Fault Circuit Interrupter.

---

## CLEANING INSTRUCTIONS

**Begin by ensuring that the mains power supply is disconnected before attempting any maintenance or adjustment of the unit. Remove the unit from the water. The filters and sponges in this unit will clog over time. Please clean regularly (at least once a month) to ensure strong water flow. Failure to maintain the unit will result in a burnt out motor and other damage.**

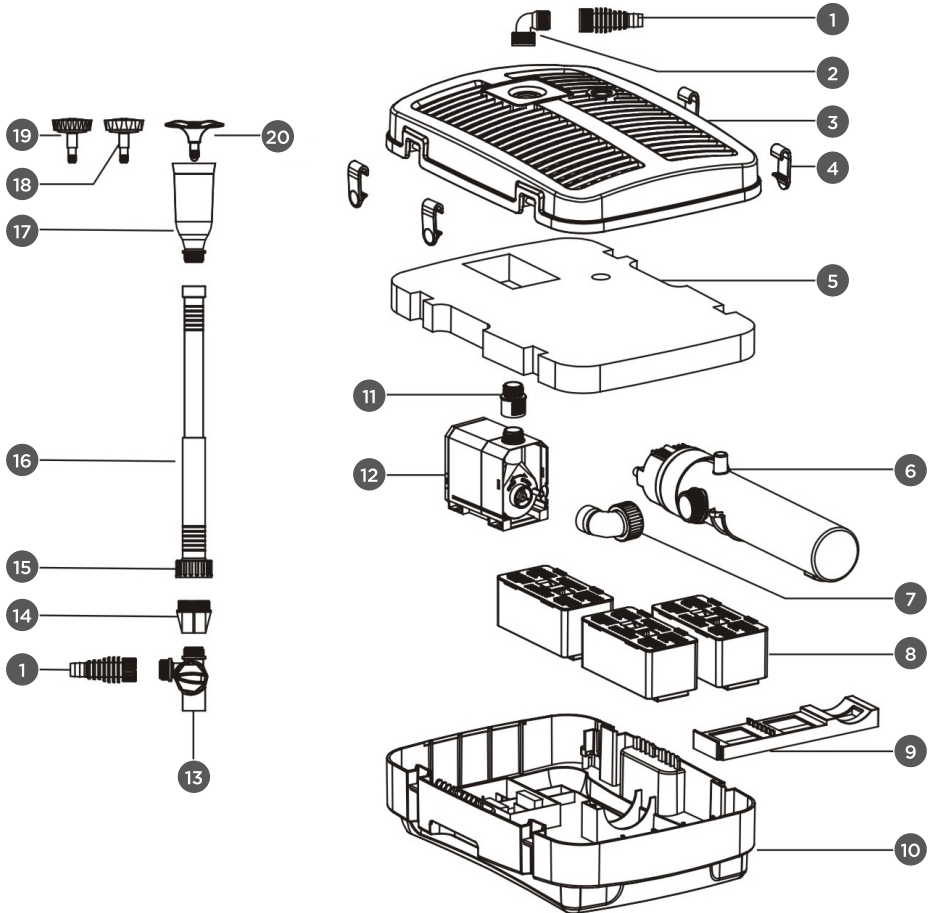
Take out the filter sponge and filter media cartridge boxes and clean them. It is recommended that this is done in a bucket of pond water to ensure the good bacteria are not depleted by the chlorine/chloramine typically found in tap water. Always check for wear and tear of the sponge and replace if necessary. Maintain the filter sponge regularly according to how quickly the sponge gets clogged up. When the flow starts to get reduced, check and clean if necessary.

**UV CLARIFIER:** You can help boost the biological function of your filter with a PondMAX bacterial additive, available at your local PondMAX authorized dealer.

The UV Clarifier lamp should be replaced regularly at the end of its design life (between 9-12 months). To replace the UV Clarifier bulb you will need to remove the fountain nozzle kit and the plastic filter cover, exposing the inside of unit. The UV Clarifier is a cylindrical shaped piece of black plastic, which extends from one end to the other. There are 2 Phillips head screws holding the UV Clarifier in, one connects the UV body to the bottom of filter body and the other secures the power cable where it exits the filter body. Remove both screws, making sure to place them in a secure place where they won't get misplaced. Now you can remove the UV Clarifier and the pump together taking care not to damage anything. The pump is connected to the UV Clarifier via a plastic elbow and also the pump power cable. Place the UV Clarifier and pump on a flat surface such as a table or counter top, then place one hand where power cable enters UV and the other hand firmly gripped on the UV body. Then twist the UV body counter clockwise to the stop position and then slide out the unit, exposing the quartz sleeve and lamp. Remove the quartz sleeve by loosening the thread on the locking ring near its base. Apply a little pressure and twist the quartz sleeve gently away from the electrical assembly. Now the lamp is clearly accessible and can be removed by pulling on it gently but first, make sure to use a cloth or gloves, so as not to touch the lamp directly with your fingers. Replace the lamp if necessary and then reassemble unit in reverse manner. Make sure to always clean the quartz sleeve and thoroughly inspect all o-rings/gaskets while UV is apart.

**PUMP:** To carry out maintenance on the pump, turn the impeller cover in a counter clock direction to the stop position. Now separate the impeller cover and pump body. Take out the impeller, clean it with clean water and a suitable brush. Inspect for excess wear and replace if necessary. Once the cleaning and inspection process is completed, reassemble the pump in reverse manner. The pump suction elbow is pushed firmly onto the inlet on pump impeller cover. Pay attention to the UV Clarifier casing when inserting it back together as the inspection hole needs to be positioned towards the top.

## COMPLETE SYSTEM (FIG. 1)



- 1 Hose tail - 20mm to 1/2 Inch BSP
- 2 Elbow 1/2 Inch to 1/2 Inch BSP
- 3 Top Filter Cover
- 4 Filter cover clips (x4)
- 5 Blue Filter Sponge
- 6 UV-Clarifier unit
- 7 Pump Suction Elbow

- 8 Filter Media Cassett (x3)
- 9 Filter Media Cassatt's Mounting Plate
- 10 All-in-One Filter Base
- 11 1/2 inch Pump Threaded Adapter
- 12 Water Pump
- 13 Duel Control T-piece Adaptor
- 14 Riser to T-piece Adaptor

- 15 Extendable Riser Locking Nut
- 16 Extendable Riser
- 17 Fountain Nozzle Mount
- 18 Fountain Head (Fine Daisy Nozzle)
- 19 Fountain Head (Corse Daisy Nozzle)
- 20 Fountain Head (Bell Nozzle)

# SF650 ALL-IN-ONE FILTER KIT

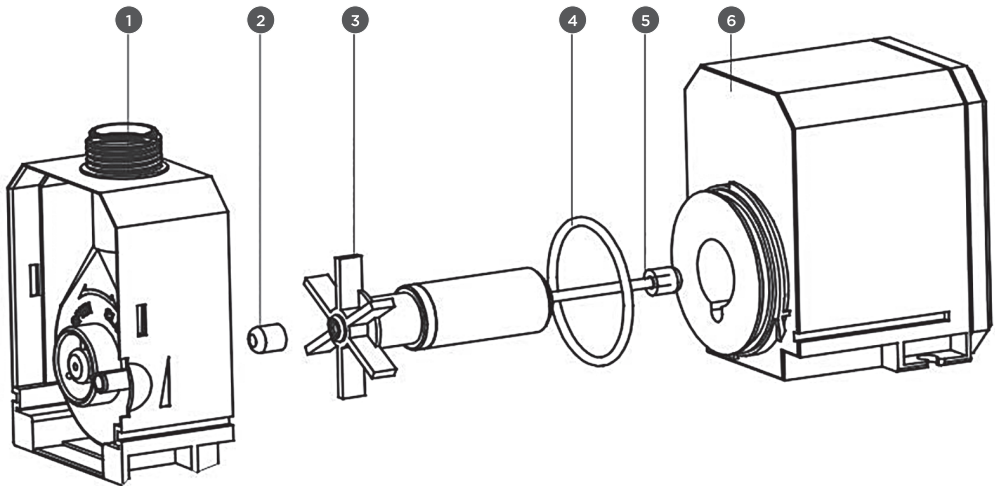
## PUMP (FIG. 2)

- 1 Impellor Cover
- 2 Rubber Grommet
- 3 Impellor
- 4 O-Ring
- 5 Ceramic Impellor Shaft
- 6 Pump Motor Body



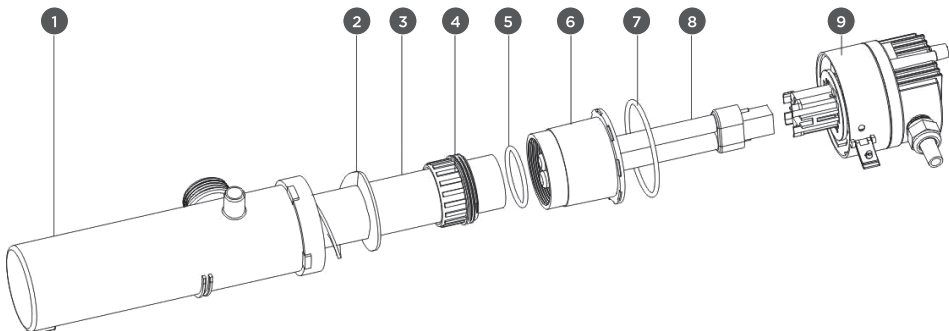
## IMPORTANT

These accessories and attachments are recommended for use with your PondMAX product specified in this manual. The use of any other accessories or attachments might present a risk of injury to persons. Only use the accessory or attachment for its stated purpose.



## UVC LAMP (FIG. 3)

- 1 UV Light Casing
- 2 Water Flow Spiral
- 3 Quartz Glass Sleeve
- 4 Quartz Sleeve Locking Nut
- 5 45mm x 4mm O-Ring
- 6 Plastic Quartz Sleeve Holder
- 7 60mm x 3.1mm O-Ring
- 8 11W Low Voltage UVC Globe
- 9 UVC Lamp Holder with Cable



## TROUBLESHOOTING

Problem	Reason	Solution
Water Pump Not Working	No Power	Check that the plug is connected and turned on
	Sponges and filter media blocked with sludge	Clean the sponges and filters
	Impellor is blocked with sludge or limescale	Clean the Impellor as per the instructions
	Running without sufficient water	Submerge the equipment underwater then plug in. Refill if necessary.
	Blocked Impellor chamber or ceramic shaft is broken	Clean the Impellor. Check for ware. Replace if necessary.
Water Pump is noisy	Blockage in pump	Clear the blockage
	Impellor & Shaft worn out	Replace Impellor & Shaft
	Impellor broken	Replace Impellor
	Water valve closed on the outlet	Open the valve and allow water to flow
	Unit inlet is blocked or the water pump inlet is blocked	Clear all blockages
UVC Lamp not working	UVC Globe blown or Quartz Sleeve broken	Replace as necessary
	Connection of the UVC Globe not sufficient	Push UV Globe in firmly until you hear a click sound

## SPARE PARTS (NOTE: THESE ARE THE MOST USED)

Description	Product Code
PondMax All in One PM2600 Impellor & Shaft	13PA001
PondMax 12v Transformer 96va	04ST036
PondMax All in One PM2600 Quartz Glass Sleeve	13PA002
PondMax All in One PM2600 Sponge Filter	13PA003
PondMax All in One PM2600 Complete Fountain Kit	13PA004
11W Low Voltage UV-C Bulb - Pondmax	11AU176



## LIMITED WARRANTY

This product comes with a warranty against defects and motor failure (Warranty). The benefits provided in this Warranty are in addition to other rights and remedies available to you under the Australia Consumer Law. The Warranty is provided to the original purchaser of the product on the following terms:

The Warranty is given by Chemkay Pty Ltd trading as Aquatec Equipment: PO Box 2087, Seville Grove, WA 6112. Tel 1300 552 202 or email [sales@aquatecequipment.com](mailto:sales@aquatecequipment.com).

To make a claim under the Warranty you must return the faulty product to the place of purchase with a valid receipt or proof of purchase.

### **A Warranty claim must be made within 1 year of the date of purchase.**

If your claim complies with the above terms and the product is not an Exhaustible Item and no Voiding Events have occurred, we will (at our sole discretion):

- repair the product, if possible; or
- provide a replacement product; or
- if a replacement product is not available, provide a refund for the purchase price paid.

You will bear the cost associated with claiming under the Warranty such as the cost of transportation and delivery of the product to and from the place of purchase.

The product contains a complete Impellor Set, O Ring & UV Globe. These items are exhaustible (Exhaustible Items) and are not covered under the Warranty.

The Warranty will be void if any of the following events occur, as determined by us, at our sole discretion (Voiding Events):

- any tampering/removal of warranty/identification labels or electrical components is evident;
- the defect has arisen due to: an accident, incorrect or inadequate installation, misuse or abuse of the product (including improper maintenance and service), excessive wear and tear, not following manufacturer's guidelines/ instructions, or the product has been used in a manner contrary to the purpose or suitability of the product;
- the product has been modified without our authority;
- the defect is caused by power surges/spikes brownouts.

Loss of livestock, damage to property or personal injury caused by the improper use or abuse of the product will not be covered and the manufacturer excludes all liability for such events, to the extent permitted by law.

In addition to the Warranty set out above, our goods come with guarantees that cannot be excluded under the Australian Consumer Law. You are entitled to a replacement or refund for a major failure and for compensation for any other reasonably foreseeable loss or damage. You are also entitled to have the goods repaired or replaced if the goods fail to be of acceptable quality and the failure does not amount to a major failure.

**Please consult your retailer for quality original PondMAX replacement parts.**

**Visit [www.aquatecequipment.com](http://www.aquatecequipment.com) for your nearest stockists.**

**E.&O.E.**