

PondMAX

WATERGARDENING TO THE MAX™

PF SERIES PRESSURE FILTER

INSTRUCTION MANUAL



DATE
MARCH 2021 v1.0

PondMAX USA
888.868.1185
www.pondmax.com

MODEL
PF1000
PF2000



**WELCOME TO THE WORLD OF PONDMAX.
YOU MADE THE RIGHT CHOICE INVESTING IN THIS
QUALITY PRODUCT. THANK YOU AND ENJOY.**

TECHNICAL SPECIFICATIONS

DESCRIPTION	PF1000	PF2000
MAXIMUM POND SIZE - WITHOUT FISH - SHADED (GAL)	1000	2000
MAXIMUM POND SIZE - WITHOUT FISH - SHADED (L)	3750	7500
MAXIMUM POND SIZE - WITH FISH - FULL SUN (GAL)	500	1000
MAXIMUM POND SIZE - WITH FISH - FULL SUN (L)	1875	3750
MAXIMUM FLOW (GPH)	1150	1550
MAXIMUM FLOW (LPH)	4500	6000
HOSE-TAIL INLET/OUTLETS (in)	1", 3/4", 1/2"	1-1/2", 1-1/4", 1"
HOSE-TAIL INLET/OUTLETS (mm)	25mm, 19mm, 13mm	38mm, 32mm, 25mm
PRODUCT ORDER CODE	23PF010	23PF020

* SUBJECT TO VARIATION ACCORDING TO LOAD.

PF SERIES FILTER



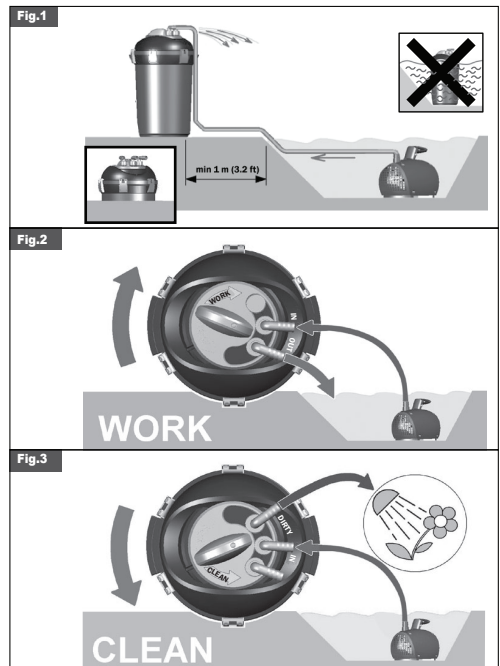
IMPORTANT SAFEGUARDS

Please read the operating instructions and familiarize yourself with the equipment before use. Correct and safe use of the equipment requires strict compliance with the safety instructions. Persons less than 16 years of age or people that are not familiar with these instructions should not use this equipment.

- **CAUTION:** This appliance can be used by children ages 8 years and up with adult supervision. Persons with reduced physical, sensory or mental capabilities or lack of experience and knowledge can use the appliance if they have been given proper instruction concerning use of the appliance in a safe way to understand the hazards involved. Children shall not play with the appliance because this is not a toy. Cleaning and user maintenance cannot be done by children without supervision.
- **WARNING:** disconnect all submerged electrical appliances in the pond before carrying out installation and maintenance operations.
- **WARNING:** disconnect all submerged electric appliances before placing your hands in the water.
- The maximum water temperature must not exceed 35 °C (95 °F).
- Place the filter at least 3 ft (1 m) from the pond edge so it does not fall into the water, and ensure that the site is not subject to flooding.
- Check that the appliance has been safely installed before putting into operation.
- Do not operate the appliance in areas with risk of freezing. During winter time it is best to remove the appliance from the pond, and empty, clean and store it indoors.
- Do not use the appliance with corrosive or abrasive liquids.
- Never connect the filters to the public water supply network.

INSTALLATION

Place the filter so it does not fall into the water and in an area that is not subject to flooding or water overflow. The filter must not be immersed in water (Fig. 1, Page 3). The Pressure Filter is easy to conceal as it can be partially buried next to the pond. Be sure to properly fit the gaskets on the connectors. You have to connect a pump to the "IN" inlet in order for the filter to operate. Connect a pipe to the "OUT" outlet to carry the filtered water to the pond (Fig. 2, Page 3). Put the knob found on the top of the filter in the WORK position (Fig. 2, Page 3).

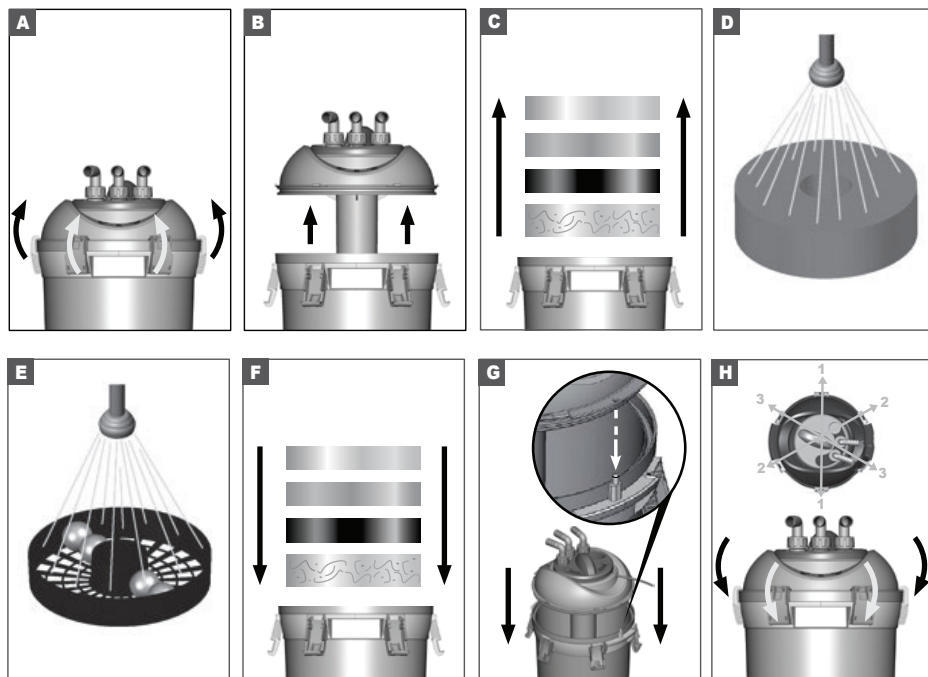


MAINTENANCE

The Pressure Filter is equipped with the "Backwash" (reversed water flow) system, which quickly cleans the filter without having to open and disassemble it. The preliminary "Backwash" system operations are as follows:

- (1) Switch off the pump.
- (2) Open the safety valve, and connect a pipe to the "DIRTY" outlet to carry the wash water of the filter at any time (Fig. 3, Page 3). You can activate the "Backwash" system while the filter is in operation by turning the knob on top of the filter to the "CLEAN" position. (5) After cleaning the filter, put the knob back in the "WORK" position.
- (3) Put the safety valve back in the closed position.

To clean more thoroughly, you have to remove the various filter materials from the filter and wash them under running water. Do not use chemical detergents. To open the filter, loosen the lid clips and lift the lid, following the instructions below. After cleaning close the filter, making sure you position the lid correctly (see Fig. G, Page 4).



PF SERIES FILTER

EXPLODED VIEW



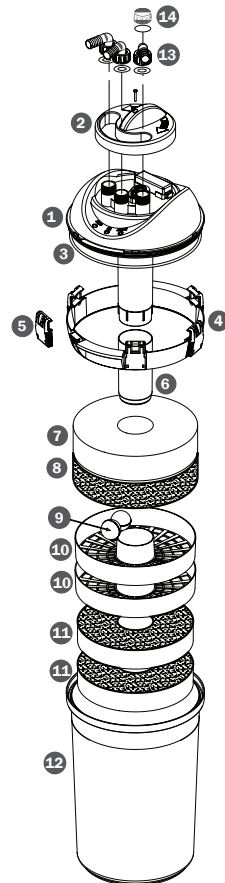
IMPORTANT

These accessories and attachments are recommended for use with your PondMAX product specified in this manual. The use of any other accessories or attachments might present a risk of injury to persons. Only use the accessory or attachment for its stated purpose.

REPLACEMENT PARTS: PF1000/2000 (NOTE: THESE ARE THE MOST USED)

No.	DESCRIPTION
01	Filter lid
02	Backwash Handle + stainless steel screw
03	Lid O-ring *
04	Lid ring
05	Lid Clips (6 pcs)
06	Extension pipe for PF2000
07	Blue filter sponge *
08	Black filter sponge *
09	Bio-sphere (biological filter media)
10	Basket for bio-spheres PF1000 (1 pc) PF2000 (2 pcs)
11	Kinshi-mat (special filter media) * PF1000 (1 pc) PF2000 (2 pcs)
12	PF1000 or PF2000 filter container
13	1" 90° Elbow for hose PF1000: ø 25-19-13 mm PF2000: ø 38-32-25 mm
14	1" Safety valve for Backwash outlet

*Component subject to wear and tear





LIMITED WARRANTY

This product is warranted to the initial purchaser to be free of defects in materials and workmanship at the time of initial purchase and for a period of 2 years for PondMAX® PF Series Filter. The filter sponge & lid O-ring are consumable parts and are not covered by the warranty. In the event this product malfunctions within 2 years from the date of purchase, the sole obligation of PondMAX USA (hereinafter referred to as PondMAX) will be to repair the unit or replace with an equivalent new or factory refurbished unit at PondMAX's discretion, subject to the following condition:

- The malfunction is proved attributable to a defect in materials or workmanship, including repairs performed under this warranty. Malfunction for any other reason-including but not limited to misuse, negligence, accident, or tampering with parts, incorrect wiring, or improper installation-will not be remedied under this warranty.
- PondMAX specifically does not guarantee chemical compatibility, and expressly does not warrant units from any problems caused by chemical attack or failure due to incompatibility of fluid being circulated by pump.
- All warranty repairs must be performed by PondMAX or a PondMAX authorized company.
- Purchaser must retain the purchase receipt and present it with this certificate as proof of ownership and entitlement to warranty repairs. Unauthorized repairs will not be compensated by PondMAX, and are not the responsibility of PondMAX, and if such repairs damage the product, such damages are not remedied under this warranty.
- Purchaser shall bear all shipping, packing and insurance costs and all other costs, excluding labor and parts necessary to effectuate repair under this warranty.
- This warranty is in lieu of all other express warranties which now or hereafter might otherwise arise with respect to this product. Any and all limited warranties, including the warranties of merchantability and fitness for particular purpose, shall have no greater duration than the duration period of the express written warranty applicable to this product, and shall terminate automatically the expiration of such duration period. Some states do not allow limitations on how long an implied warranty lasts, so the above limitation may not apply to you. No action shall be brought for breach of any implied or express warranty after one year subsequent to the expiration of the duration period of the express written warranty.
- Incidental and consequential damages caused by malfunction, defect, or otherwise, and with respect to breach of any express or implied warranty, are not the responsibility of PondMAX, and to the extent permitted by law, are hereby excluded for property damage, loss of livestock and, to the extent not unconscionable, for personal injury damage. Some states do not allow the exclusion or limitation of incidental or consequential damages, so the above limitation or exclusion may not apply to you.
- This warranty does not apply to any malfunction arising out of any application of this product other than normal use, unless such application is upon request specifically approved in writing by PondMAX.
- The provisions of this warranty are severable and if any provision shall be deemed invalid, the remaining provisions shall remain in full force and effect.
- Rights under this warranty are not assignable without the express prior consent in writing by PondMAX and, regardless of the terms of such consent in writing, such assignee shall have no greater rights than his assignor had against PondMAX.

**Please consult your dealer for quality original PondMAX replacement parts and Warranty support.
Visit www.pondmax.com for a dealer near you, or call us at 888.868.1185.**