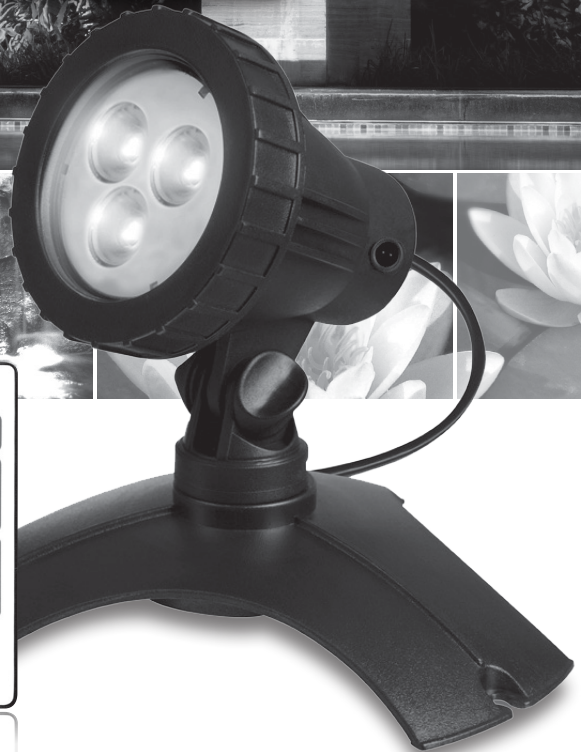


PondMAX

WATERGARDENING TO THE MAX

COLOR CHANGING LED LIGHTING SYSTEM

INSTRUCTION MANUAL



888.868.1185

info@pondmax.com

www.pondmax.com

VERSION
MARCH 2017



WELCOME TO THE WORLD OF PONDMAX™.
YOU MADE THE **RIGHT** CHOICE INVESTING IN THIS
QUALITY PRODUCT. THANK YOU AND **ENJOY.**

BEFORE USING THIS PRODUCT, PLEASE READ THESE INSTRUCTIONS CAREFULLY AND FAMILIARIZE YOURSELF WITH THE UNIT. PLEASE KEEP THESE INSTRUCTIONS IN A SAFE PLACE FOR FUTURE REFERENCE.

INSTRUCTIONS INCLUDE

TECHNICAL SPECIFICATIONS

DESIGN HIGHLIGHTS

BENEFITS INCLUDE

IMPORTANT SAFEGUARDS

INSTALLATION AND MAINTENANCE

- Transformer (Please note: Transformers comes with "Complete Light Kits" only. "Starter Lights" and "Add-On Lights" do not come with Transformers. A 12-Volt AC Transformer can be purchased separately to power lights.)
- Transformer Adapter Cable
- Photocell Light Sensor (optional)
- Starter Light
- Add-On Light (optional)
- Extension Cables (optional)
- Splitters (optional)

PARTS BREAKDOWN

TROUBLESHOOTING

WARRANTY

TECHNICAL SPECIFICATIONS

DESCRIPTION	POWER CONSUMPTION	VOLTAGE	CABLE LENGTH	TRANSFORMER
24PL690 Small Color Changing Complete Light Kit	2.3 Watts	8-16Volt AC/DC	16 Ft	18 Watt
24PL680 Small Color Changing Starter Light	2.3 Watts	8-16Volt AC/DC	16 Ft	Not Included
24PL681 Small Color Changing Add-On Light	2.3 Watts	8-16Volt AC/DC	9 Ft	Not Included
24PL692 Large Color Changing Complete Light Kit	5.8 Watts	8-16Volt AC/DC	16 Ft	36 Watt
24PL682 Large Color Changing Starter Light	5.8 Watts	8-16Volt AC/DC	16 Ft	Not Included
24PL683 Large Color Changing Add-On Light	5.8 Watts	8-16Volt AC/DC	9 Ft	Not Included
31PS454 36 Watt Color Changing Controller w/Remote**	1 Watt	8-16Volt AC	N/A	N/A
24ST430 Photo Cell Sensor*	N/A	8-16Volt AC	N/A	N/A

** COMES WITH "STARTER LIGHTS" AND "COMPLETE LIGHT KITS" ONLY

* OFFERED SEPARATELY

COLOR CHANGING LED LIGHTING SYSTEM

DESIGN HIGHLIGHTS

The PondMAX Color Changing Lights have been manufactured to provide you with the best quality lighting system for your outdoor landscape or water feature. Visit our website www.pondmax.com to view our complete range of pond filtration, pumps, water treatments and all other pond and water feature related products.

- Your PondMAX Remote controlled Color Changing LED Pond/Garden Light has been manufactured with advanced technology and quality materials to ideally integrate into any pond and garden, thanks to their compact design.
- The PondMAX light has a sealed glass lens and is suitable for use in or out of water.
- The energy efficient LED's emit multi-colored light with special effects and is remote controlled, providing years of ease and maintenance-free satisfaction.
- The easy-to-use remote control operates from up to 30Ft from the controller.
- The lights can be daisy chained in series to simplify the installation wiring requirements and do not require a certified electrician to install.
- A 115 Volt Transformer converts the power supply to a safe 12 Volts for peace of mind in your pond or garden. (Please note: Transformers comes with "Complete Light Kits" only. "Starter Lights" and "Add-On Lights" do not come with Transformers. A 12 Volt AC Transformer can be purchased separately to power the lights.) Always use a transformer that has a greater wattage output than the total wattage requirement of your lighting system.

BENEFITS INCLUDE

The benefits of this product lay in the root meaning of the word "**system** (noun) *a regularly interacting or interdependent group of items forming a unified whole.*"

What PondMAX has achieved in designing a modular Lighting System is greater than the product by itself. PondMAX has created a whole set of products that can be arranged in so many different configurations, that you will be hard pressed to prove that it will not work for you. Follow through the remaining portion of this manual to see for yourself and how your light system can help you make your outdoor living easy.

IMPORTANT SAFEGUARDS

Correct and safe use of the system requires strict compliance with the safety instructions. For safety reasons, persons less than 16 years of age or persons that are not familiar with these instructions should not use this equipment.



WARNING: RISK OF ELECTRIC SHOCK!

- Connect to a UL CLASS 2 approved 12 volt transformer only. For your own safety, disconnect from the power supply before any maintenance. Always unplug the transformer from the power supply when not in use. Never pull the cable to disconnect the plug from the power supply - grasp the plug and pull to disconnect.
- Use only in ponds and small decorative fountains where persons will immerse no more than their hands and lower arms, while the product is energized.
- DO NOT use in water intended for swimming, wading, or bathing.
- All installer fabricated wire connections must be located outside of the pond or fountain.
- Low voltage circuit must be supplied by a power unit marked as suitable for supplying submersible luminaries.
- Power unit must be supplied by a circuit protected by a ground fault circuit interrupter (GFCI).
- CAUTION: For use only on a branch circuit protected by a Class-A Type Ground Fault Circuit Interrupter. The transformer power unit must be supplied by a circuit protected by a ground fault circuit interrupter (GFCI).
- Maximum immersion depth: 3 Ft



AVERTISSEMENT: RISQUE DE CHOC ÉLECTRIQUE!

- Se connecter à un transformateur de 12 volts homologué UL CLASSE 2 seulement. Pour votre propre sécurité, débranchez l'alimentation électrique avant tout entretien. Débranchez toujours le transformateur de l'alimentation électrique lorsqu'il n'est pas utilisé. Ne tirez jamais sur le câble pour débrancher la fiche de l'alimentation électrique - saisissez la fiche et tirez pour débrancher.
- Utiliser seulement dans les bassins et les petites fontaines décoratives où les personnes ne plongeront pas plus que leurs mains et leurs bras inférieurs pendant que le produit est sous tension.
- NE PAS utiliser dans l'eau destinée à nager, à patauger ou à prendre un bain.
- Toutes les connexions de fils fabriqués par l'installateur doivent être situées à l'extérieur de l'étang ou de la fontaine.
- Le circuit basse tension doit être alimenté par une unité d'alimentation marquée comme appropriée pour fournir des luminaires submersibles.
- L'unité d'alimentation doit être alimentée par un circuit protégé par un disjoncteur de fuite à la terre (GFCI).
- ATTENTION: À utiliser uniquement sur un circuit de dérivation protégé par un disjoncteur de fuite à la terre de type A. L'alimentation du transformateur doit être alimentée par un circuit protégé par un disjoncteur de fuite à la terre (GFCI).
- Profondeur maximale d'immersion: 3 pi

PRODUCT SPECIFIC SAFEGUARDS

- Avoid connecting the power supply to an extension cord. Please connect the Transformer directly to an outdoor GFCI protected hooded, flush style, cover plate receptacle marked "Wet Location", while in use.
- Do not operate the light system if the appliance or any components of the system, such as the power cable, has been damaged. Check appliance for defects regularly.
- Do not operate the lighting system without checking that the connections are tight first.
- When used in submerged application, be sure the equipment does not come in contact with chlorine, hydrogen peroxide or other oxidizers. The maximum immersion depth should not exceed 3Ft.
- If used externally, keep away from other heat generating equipment such as patio heaters etc.
- The lights are designed to be used inside fountains, directly in a pond or used as outdoor landscape lighting. Never shall these lights be used in human body immersion applications (e.g. spa or pool).
- Any damage to the equipment or unmerited operation will bring dangers to the surrounding precincts. If there is any damage of the equipment, it must not be used. The equipment should be placed out of reach of children.
- To avoid an electric shock, do not attach the plug to the power supply socket with wet hands. The drip loop method should be used to prevent water from traveling down the cable and onto the plug or power supply. If the plug does get wet, do not unplug the cable. Disconnect the circuit breaker that supplies power to the power supply point. Then unplug and examine the plug and power supply point for presence of water. If the power point has become wet, you should consult an electrician before using the power point again.
- Do not install or store the appliance where it will be exposed to extreme hot or cold temperatures. Do not use in water above 95°C.
- Do not cut the fixture cable as this may result in voiding your warranty.
- Care should be taken to arrange the power cable so that it cannot be accidentally tripped over or pulled.
- Do not attempt to repair the electrical appliance yourself. Return to an authorized service center or place of purchase if a fault occurs, (regular maintenance is not considered repair and is required by user).

INSTALLATION AND MAINTENANCE

TRANSFORMER

The Transformer is the power supply that is required for your PondMAX lighting system to work. You are not required to use the PondMAX brand Transformer specifically and in some configurations you may want to integrate your PondMAX lighting system into an existing low voltage power source you already have. Please read the below instruction either way, to get an understanding of the requirements for the PondMAX lighting system installation. (Please note: A transformers is provided with "Complete Light Kits" only. "Starter Lights" and "Add-On Lights" do not come with Transformers. A 12-Volt AC Transformer can be purchased separately to power lights.) Always use a transformer that has a greater wattage output than the total wattage requirement of your lighting system.



WARNING: RISK OF ELECTRIC SHOCK!

- CAUTION: for use only on a branch circuit protected by a Class-A Type Ground Fault Circuit Interrupter.
- For use with pond and landscape lighting systems only.
- This device is accepted as a component of a landscape lighting system where the suitability of the combination shall be determined by CSA or a local inspection authorities having jurisdiction.
- Do not use extension cords to supply power to the transformer.
- Do not connect two or more power supplies in parallel.
- Do not use with a 120 volt dimmer.
- Power supplies are for outdoor use only.
- Not for use with pool/spa equipment.
- Ensure any irrigation is not directly spraying the transformer.



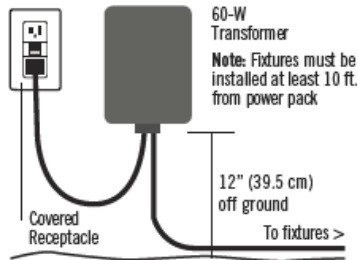
AVERTISSEMENT: RISQUE DE CHOC ÉLECTRIQUE!

- ATTENTION: à utiliser uniquement sur un circuit de dérivation protégé par un disjoncteur de fuite à la terre de type A.
- Pour utilisation avec les systèmes d'éclairage d'étang et de paysage seulement.
- Cet appareil est accepté en tant que composant d'un système d'éclairage paysager où l'aptitude de l'ensemble doit être déterminée par l'ASC ou par les autorités d'inspection locales compétentes.
- N'utilisez pas de rallonges pour alimenter le transformateur.
- Ne connectez pas deux alimentations ou plus en parallèle.
- Ne pas utiliser avec un variateur de 120 volts.
- Les alimentations électriques sont destinées à un usage extérieur uniquement.
- Ne pas utiliser avec l'équipement de piscine / spa.
- Assurez-vous que l'irrigation ne pulvérise pas directement le transformateur.

COLOR CHANGING LED LIGHTING SYSTEM

TRANSFORMER INSTALLATION

Install the Transformer unit 10 feet (3.05 m) or more from a water feature and 12 inches (0.3m) above the ground. Mount the Transformer to a secure object such as a post or the side of your home. (See diagram below)



- If required, have a qualified electrician install an outdoor GFCI protected hooded flush type cover plate receptacle marked "Wet Location" and following the requirements above.
- Route fixture cable to desired fixture locations. CAUTION: Fixture(s) must be installed in accordance with all local codes and ordinances.
- Follow the remaining steps in this manual before plugging in the transformer to a GFCI outdoor electrical outlet that has a weather-resistant cover. Do not use an extension cord to supply power to transformer.

MAINTENANCE

- Do not submerge transformer.
- Do not repair, or tamper with the power cord or plug.
- Keep transformer free of debris and/or plant life to reduce the risk of fire.

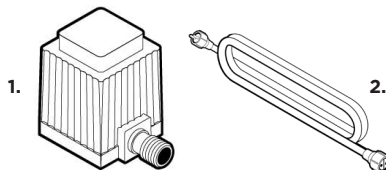
TRANSFORMER ADAPTER CABLES

INSTALLATION

- Connect your 3ft. transformer adapter cable (2) plug to the outlet side of the transformer (1) and tighten the rubber nut to ensure a safe connection.
- The transformer adapter cable can also be cut and spliced rather than the light cable, to allow connection to any other approved 12 Volt AC transformer. This will not void the warranty of the lighting system.

MAINTENANCE

- Do not submerge the transformer adapter cable.
- Check that the connections on the transformer adapter cable are tight on a periodic basis.



* ALL PICTURES SHOWN ARE FOR ILLUSTRATION PURPOSE ONLY. ACTUAL PRODUCT MAY VARY

PHOTOCELL LIGHT SENSOR (OPTIONAL)

The Photozell Light Sensor is an item purchased separately to provide your PondMAX lighting system with the ability to turn on automatically at dusk and turn off at dawn.

WARNING:

- Do not submerge the photocell sensor.
- Ensure that irrigation is not directly spraying the photocell.

AVERTISSEMENT:

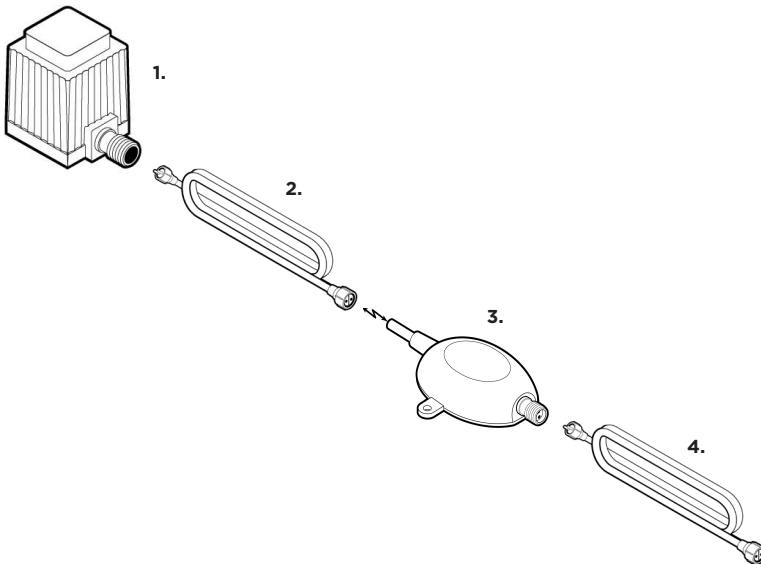
- Ne plongez pas le capteur de cellule photoélectrique.
- Assurez-vous que l'irrigation ne pulvérise pas directement le capteur de cellule photoélectrique.

INSTALLATION

- The dusk-till-dawn photocell sensor (3) comes with an additional 3ft transformer adapter cable (2). This adapter cable must be used to connect the photocell from the "Inlet" port, directly to the transformer (1).
- Then use the 3ft transformer adapter cable (4) that is provided with your light, to connect to the "Outlet" port of the photocell sensor (3).
- Tighten the rubber nuts to ensure safe connections.
- Mount the photocell sensor 12 inches (0.3M) above the ground and at least 10ft (3.5m) from the water feature.
- Make sure that the photo eye on top of the photocell sensor is fully exposed to the daylight and is clear of any foliage. Also make sure it is free from the beam of any lights, which may be on at night. This will prevent it from working correctly.

MAINTENANCE

- Do not submerge the photocell sensor.
- Keep the photocell lens on top of the unit clean from dirt and other debris.



* ALL PICTURES SHOWN ARE FOR ILLUSTRATION PURPOSE ONLY. ACTUAL PRODUCT MAY VARY

COLOR CHANGING LED LIGHTING SYSTEM

RF CONTROLLER & REMOTE

The RF Controller (3) and Remote (5) is the brain for your PondMAX lighting system. It provides you the ability to control the different colors and a variety of modes, anywhere within 30ft of the controller. The different selections you make on the Remote are then transmitted to the RF Controller via radio frequencies and the lights will change accordingly. (NOTE: The RF Controller is rated for up to 36 watts maximum.)

WARNING:

- Suitable for outdoor use only.
- Keep out of direct sunlight. Keep in well ventilated area to disperse heat.
- For installation in or on non-combustible materials only.
- Do not submerge the RF controller. Ensure that any irrigation is not directly spraying the RF controller.
- Never connect more than 36 watts of lighting to a single controller (refer to page 1 for light specifications).

AVERTISSEMENT:

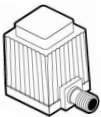
- Convient pour une utilisation en extérieur seulement.
- Ne pas exposer à la lumière directe du soleil. Conserver dans un endroit bien ventilé pour disperser la chaleur.
- Pour l'installation dans ou sur des matériaux non combustibles seulement.
- Ne submergez pas le contrôleur RF. Assurez-vous que l'irrigation ne pulvérise pas directement le contrôleur RF.
- Ne connectez jamais plus de 36 watts d'éclairage à un seul contrôleur (reportez-vous à la page 1 pour les spécifications d'éclairage).

INSTALLATION

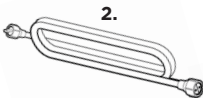
- Use the 3ft transformer adapter cable (2) that is provided with your light to connect the transformer (1) or optional photocell sensor (not pictured) to the inlet side of the RF controller. (3)
- Then attach your starter light fixture cable (5) to the outlet side of the RF controller (3).
- Tighten the rubber nuts to ensure safe connections.
- Mount the RF controller 12 inches (0.3M) above the ground and at least 10ft (3.5m) from a water feature.
- Make sure that the RF controller is not exposed to direct sunlight and in a well ventilated area to avoid overheating.
- Carefully install the battery into your remote. (4)

MAINTENANCE

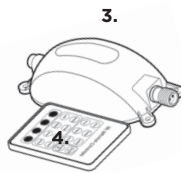
- Do not submerge the RF controller or remote at any time.
- Replace the remote battery periodically to ensure uninterrupted use.



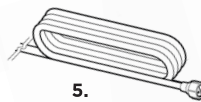
1.



2.



3.



5.



Remote Settings:

Dimmer Control

Color Selection

Lighting Effects



4.

On/Off

Cycle Speed

* ALL PICTURES SHOWN ARE FOR ILLUSTRATION PURPOSE ONLY. ACTUAL PRODUCT MAY VARY

STARTER LIGHT

Your Starter Light is the first light you will connect in your lighting system. The Starter light comes with a 16ft underwater cable to connect between your RF controller and the fixture. These lights also include an underwater daisy chain connector on the side of the fixture that can be used to connect more lights to your lighting system. These lights are designed to work in or out of the water and can be used for many purposes to fit your needs. (Please note: "Starter Lights", do not come with a transformer. You must purchase a 12 Volt AC transformer separately to power lights.) Always use a transformer that has a greater wattage output than the total wattage requirement of your lighting system.

WARNING:

- Suitable for outdoor use only.
- DO NOT use in water intended for swimming, wading, immersion, or bathing.
- DO NOT tamper with the light cable or connectors, as this can result in injury and may void the warranty.
- DO NOT connect more than 36 watts of lighting to a single RF Controller (refer to page 1 for lighting specifications).

AVERTISSEMENT:

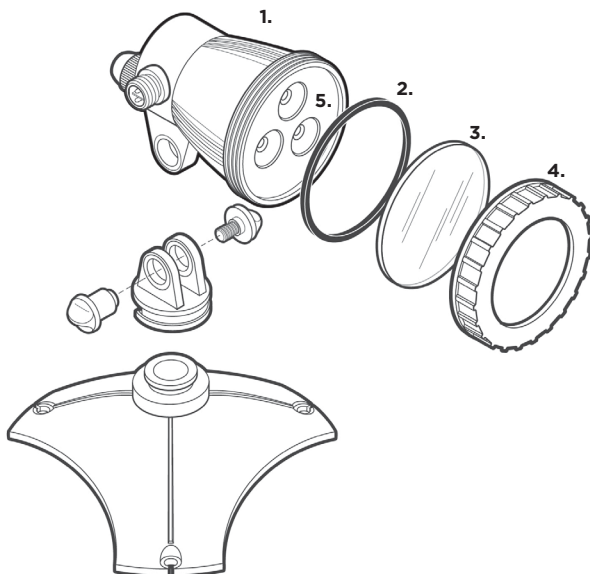
- Convient pour une utilisation en extérieur seulement.
- NE PAS utiliser dans l'eau destinée à la baignade, à la baignade, à l'immersion ou au bain.
- NE PAS altérer le câble d'éclairage ou les connecteurs, car cela pourrait entraîner des blessures et annuler la garantie.
- NE PAS connecter plus de 36 watts d'éclairage à un seul contrôleur RF (reportez-vous à la page 1 pour les spécifications d'éclairage).

INSTALLATION

- Install your light in the desired place in your landscape or in your water feature.
- Run the cable back to your RF controller. (The RF controller must be 10ft from the water feature.)
- Connect your light cable connector to the outlet side of the RF controller and tighten the plastic nut to ensure a safe connection.
- Bury the cable 6" below the surface to protect it from damage. Avoid damage to the cable from knives, shovels and stones.
- Now plug the transformer into a power supply and test your remote. Transformer not included. (Reminder: If you are using a photocell to wait until dark to confirm the system is working correctly.)
- Finally tighten the cap on the electrical connector on the side of the light to prevent leaking, which could cause a short circuit.

MAINTENANCE

- Clean the lens of the light on a regular basis.
- Check cable connections to make sure they are tight and waterproof on a regular basis.
- If it is determined that the lamp has bad, you can replace it easily. First unplug the lighting system from the power source. Remove the light from the water and dry it off. Then remove the lens cover ring (4), the lens (3) and the lens gasket (2). You can now remove the LED lamp module (5) from the housing (1). This can be done by cupping your hand and clapping the fixture on your hand so that the lamp falls into the palm of your hand, when it comes out. Inspect the lamp holder in the bottom of the fixture for any corrosion or damage before installing the new lamp in its place. Next clean the gasket and lens thoroughly and reinstall. The gasket must then be reinstalled and then the lens. Finally, while holding the lens in a central position with your thumb, go ahead and tighten the lens ring back into place. Do not over tighten.



* ALL PICTURES SHOWN ARE FOR ILLUSTRATION PURPOSE ONLY. ACTUAL PRODUCT MAY VARY

COLOR CHANGING LED LIGHTING SYSTEM

ADD-ON LIGHT

The Add-On Lights are perfect for extending your lighting system. The Add-On light comes with a 9Ft underwater cable, to connect directly to your Starter Light or other Add-On Lights. Similar to the Starter light these lights also include an underwater daisy chain connector on the side of the fixture, to continue the sequence on. (NOTE: Add-On Lights do not come with RF controller, remote, transformer or transformer adapter cables).

WARNING:

- Suitable for outdoor use only.
- DO NOT use in water intended for swimming, wading, immersion, or bathing.
- DO NOT tamper with the light cable or connectors, as this can result in injury and will void the warranty.
- DO NOT exceed more than 100ft of total cable length or 100 watts, on one string of lights.

AVERTISSEMENT:

- Convient pour une utilisation en extérieur seulement.
- NE PAS utiliser dans l'eau destinée à la baignade, à la baignade, à l'immersion ou au bain.
- NE PAS altérer le câble d'éclairage ou les connecteurs, car cela pourrait entraîner des blessures et annuler la garantie.
- NE PAS dépasser plus de 100 pieds de longueur totale de câble ou 100 watts, sur une chaîne de lumières.

INSTALLATION

- Install your light in the desired place in your landscape or water feature.
- Run the cable back to the previous light in the chain.
- Connect your light cable connector to the daisy chain connector on the side of the previous light and tighten the plastic nut to ensure a safe connection.
- Bury the cable 6" below the surface to protect it from damage. Avoid damage to the cable from knives, shovels and stones.
- Finally tighten the cap on the electrical connector on the side of the light to prevent leaking and a short circuit.

MAINTENANCE

- Follow the maintenance procedures as noted for the Starter Light (on previous page).



EXTENSION CABLES (OPTIONAL)

Extension cables may be necessary to get your lights positioned where you want them. This Extension Cable can be used before the lights or in between the lights. This is especially helpful when you need to make sure the controller is more than 10Ft from you're a water feature. (Note: Due to voltage line drop, the maximum recommended length of cable in one string is 100Ft from the Transformer to the final light fixture.)

WARNING:

- DO NOT tamper with the cable or connectors as this can result in injury and may void the warranty.
- DO NOT exceed more than 100ft of total cable length or 100 watts on one string of lights.

AVERTISSEMENT:

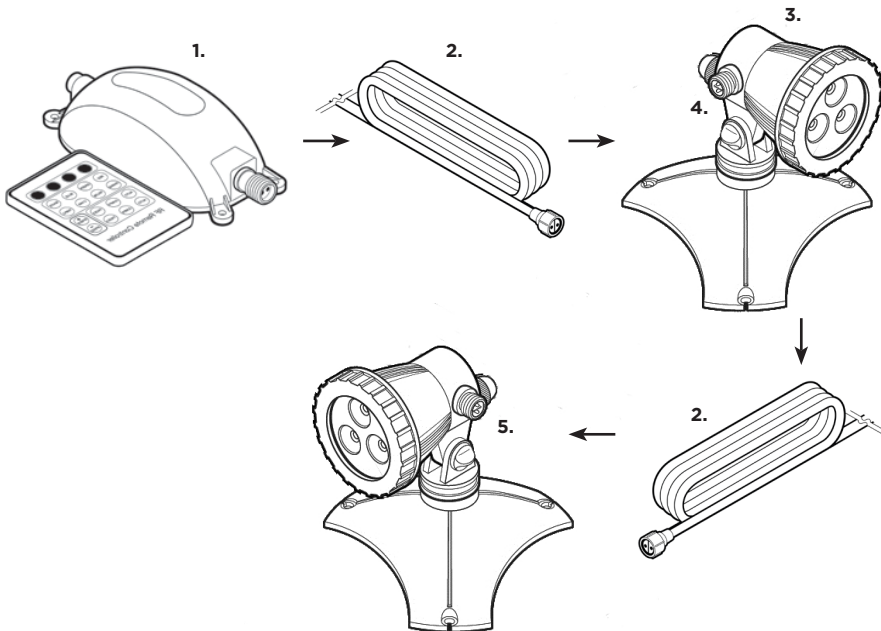
- NE PAS altérer le câble d'éclairage ou les connecteurs, car cela pourrait entraîner des blessures et annuler la garantie.
- NE PAS dépasser plus de 100 pieds de longueur totale de câble ou 100 watts, sur une chaîne de lumières.

INSTALLATION

- To extend the distance from the RF controller (1) to the starter light (3) connect the appropriate end of your extension cable (2) to the "Outlet" side of the RF controller (1). Then connect the remaining end of extension cable, to the cable of Starter Light (3).
- To extend the distance between two lights, simply connect the appropriate end of the extension cable (2) to the daisy chain connector (4) from the first light and then connect remaining end of extension cable to the cable of second light (5).
- Tighten the plastic nuts to ensure a safe connection.

MAINTENANCE

- Check that the extension cable connectors are tight on a periodic basis.
- Avoid damage to the cable with knives, shovels and stones etc.



* ALL PICTURES SHOWN ARE FOR ILLUSTRATION PURPOSE ONLY. ACTUAL PRODUCT MAY VARY

COLOR CHANGING LED LIGHTING SYSTEM

SPLITTERS (OPTIONAL)

There are two different types of Splitters. One type is used to split the power coming from the Transformer into multiple lines. This is so you can power multiple light systems with one Transformer. This Splitter will always be inline after the Transformer but before the Transformer Adapter Cable. Available as a 3-way and 5-way splitter (like image below).

The other type of Splitter is an underwater rated splitter that is used to split power to additional lights within a single light system. This type of Splitter is installed after the controller and between lights, in the same fashion as you would connect an extension cable.

WARNING:

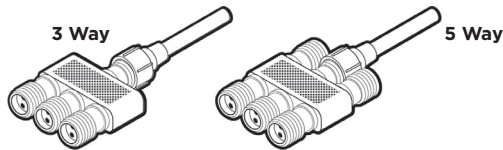
- Do not submerge the power splitters.
- DO NOT exceed more than 100 watts of lighting on a single splitter.

AVERTISSEMENT:

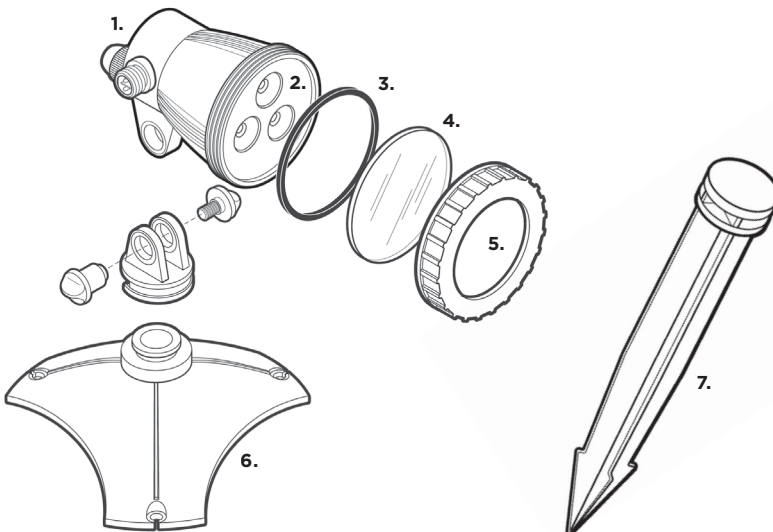
- Ne submergez pas les répartiteurs de puissance.
- NE PAS dépasser plus de 100 watts d'éclairage sur un seul séparateur.

INSTALLATION

- Refer to the installation of the photocell switch earlier on in this manual to learn how to install the power splitters.
- Refer to the installation of the extension cables above to learn how to install the underwater splitter.

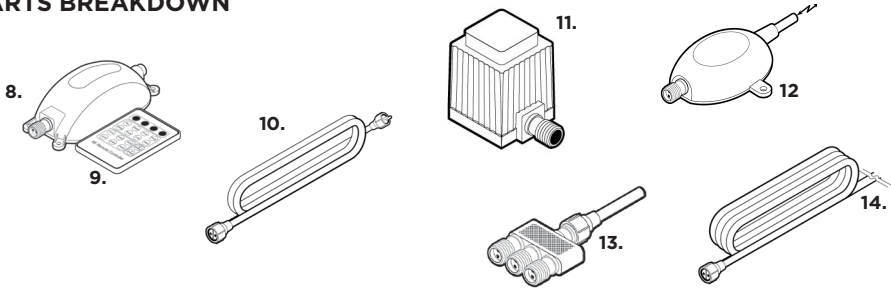


PARTS BREAKDOWN



* ALL PICTURES SHOWN ARE FOR ILLUSTRATION PURPOSE ONLY. ACTUAL PRODUCT MAY VARY

PARTS BREAKDOWN



REF NO.	DESCRIPTION	SMALL CC LIGHT PART NO.	LRG CC LIGHT PART NO.
1	Light Fixture	N/A	
2	LED Color Changing Lamp	31PS451	31PS445
3	Lens Gasket	31PS321	31PS320
4	Lens	N/A	
5	Lens Ring	31PS317	31PS316
6	Weighted Foot Base	N/A	
7	Garden Stake	N/A	
8	RF Controller and Remote Set	31PS454	
9	Remote Only	31PS260	
NOT SHOWN	Remote Battery	31PS456	
10	Transformer Adapter Cable, 3Ft (Only available with "Starter Lights" and "Complete Light Kits")	31PS457	
11	Transformer (Only available with "Complete Light Kits")	24ST015	24ST016
12	Photocell Light Sensor (Optional)*	24ST430	
13	3-Way Power Splitter, 2-Wire (Optional)*	24ST030	
NOT SHOWN	5-Way Power Splitter, 2-Wire (Optional)*	24ST031	
NOT SHOWN	5-Way Underwater Power Splitter, 4-Wire (Optional)*	24ST684	
14	Extension Cable, 4-Wire, 16Ft (Optional)*	24ST440	

* OFFERED SEPARATELY

* ALL PICTURES SHOWN ARE FOR ILLUSTRATION PURPOSE ONLY. ACTUAL PRODUCT MAY VARY

COLOR CHANGING LED LIGHTING SYSTEM

TROUBLESHOOTING

Problem	Reason	Solution
LIGHT NOT WORKING	No Power	Check that the transformer plug is connected and power point is working.
	Bad Transformer	Replace the transformer or the fuse within the transformer (if applicable). Check that there is not more than the recommended amount of lights running off the transformer.
	Short Circuit/Bad Connection	Inspect and test every light, lamp and connection individually on a good transformer, until it is determined where the short is at. Replace parts to correct the short.
	Damaged Cable	Inspect the entire length of the lighting system cable and look for cuts or damage resulting in exposed copper wire. Replace cable or complete fixture where the damage is.
	Defective Lamp	Inspect the lamp socket is not damaged and make sure that the inside of fixture is free of moisture. Replace the lamp.
	Bad Controller	If Possible test the controller with a good transformer using an amp meter. Do not connect a light during this test. The controller should only read 0.05 amps. Replace the controller. Check that there is not more than the recommended amount of lights on one controller (Max. Capacity= 36 Watts).
	Remote Not Working	Change the battery in the remote. Pair the remote to the controller by unplugging the power. Then hold your finger on the power button on the remote and plug the system in while doing so. Continue to hold the button until the lights blink, then test again. Replace remote if necessary.
LIGHT WORKING INTERMITTINGLY	Damaged Cable	Inspect the entire length of the lighting system cable and look for cuts or damage resulting in exposed copper wire. Replace cable or complete fixture where the damage is.
	Short Circuit/Bad Connection	Inspect the entire length of the lighting system cable and look for cuts or damage resulting in exposed copper wire. Replace cable or complete fixture where the damage is.
	Defective Lamp	Inspect the lamp socket is not damaged and make sure that the inside of fixture is free of moisture. Replace the lamp.
	Bad Transformer	Replace the transformer. Check that there is not more than the recommended amount of lights running off the transformer.
	Lights Not Coordinated With Remote	Test by removing the first light in the system. If problem is fixed replace that one light. If not fixed then replace the controller and remote set. Check to make sure there is not more than the recommended lights on one controller.
	Remote Not Working	Change the battery in the remote. Pair the remote to the controller by unplugging the power. Then hold your finger on the power button on the remote and plug the system in while doing so. Continue to hold the button until the lights blink, then test again. Replace remote if necessary.

COLOR CHANGING LED LIGHTING SYSTEM

LIMITED WARRANTY

- This product is warranted to the initial purchaser to be free of defects in materials and manufacture workmanship at the time of initial purchase and for a period of 2 years aFter. Some parts are consumable and may need to be replaced as part of ongoing product maintenance and are not covered by this Warranty. In the event this product malfunctions within 2 years from the date of purchase, the sole obligation of PondMAX™ International (hereinaFter referred to as PondMAX™) will be to repair the unit or replace with an equivalent new or factory refurbished unit at PondMAX's discretion, subject to the following condition:
- The malfunction is proved attributable to a defect in materials or manufacture workmanship, including repairs performed under this warranty. Malfunction for any other reason including but not limited to misuse, negligence, accident, or tampering with parts, incorrect wiring, or improper installation-will not be remedied under this warranty.
- PondMAX™ specifically does not guarantee chemical compatibility, and expressly does not warrant units from any problems caused by chemical attack or failure due to incompatibility of fluid used near this lights system.
- All warranty repairs must be performed by PondMAX™ or a PondMAX™ authorized company.
- Purchaser must retain the purchase receipt and present it with this certificate as proof of ownership and entitlement to warranty repairs. Unauthorized repairs will not be compensated by PondMAX™, and are not the responsibility of PondMAX™, and if such repairs damage the product, such damages are not remedied under this warranty.
- Purchaser shall bear all onsite labor, shipping, packing and insurance costs and all other costs, excluding in house labor and parts necessary to effectuate repairs under this warranty.
- This warranty is in lieu of all other express warranties which now or hereaFter might otherwise arise with respect to this product. Any and all limited warranties, including the warranties of merchantability and fitness for particular purpose, shall have no greater duration than the duration period of the express written warranty applicable to this product, and shall terminate automatically the expiration of such duration period.
- Some states do not allow limitations on how long an implied warranty lasts, so the above limitation may not apply to you. No action shall be brought for breach of any implied or express warranty aFter one year subsequent to the expiration of the duration period of the express written warranty.
- Incidental and consequential damages caused by malfunction, defect, or otherwise, and with respect to breach of any express or implied warranty, are not the responsibility of PondMAX™, and, to the extent permitted by law, are hereby excluded for property damage, loss of livestock and, to the extent not unconscionable, for personal injury damage. Some states do not allow the exclusion or limitation of incidental or consequential damages, so the above limitation or exclusion may not apply to you.
- This warranty does not apply to any malfunction arising out of any application of this product other than normal use, unless such application is upon request specifically approved in writing by PondMAX™.
- The provisions of this warranty are severable and if any provision shall be deemed invalid, the remaining provisions shall remain in full force and effect.
- Rights under this warranty are not assignable without the express prior consent in writing by PondMAX™ and, regardless of the terms of such consent in writing, such assignee shall have no greater rights than his assignor had against PondMAX™.

Please consult your retailer for quality original PondMAX replacement parts.

Visit www.pondmax.com for your nearest dealer.

888.868.1185

info@pondmax.com



WATERGARDENING TO THE MAX

888.868.1185

info@pondmax.com