

PondMAX

WATERGARDENING TO THE MAX™

CLEAR WATER KIT INSTRUCTION MANUAL



DATE
MARCH 2021 v1.0

PondMAX USA
888.868.1185
www.pondmax.com

MODEL
CW1800



**WELCOME TO THE WORLD OF PONDMAX.
YOU MADE THE RIGHT CHOICE INVESTING IN THIS
QUALITY PRODUCT. THANK YOU AND ENJOY.**

TECHNICAL SPECIFICATIONS

PondMAX® CW1800 Clear Water Kit (Filter Tank)

DESCRIPTION	CW1800
DIMENSIONS	15.5" x 11.5" x 15.5" (40 x 29 x 40 cm)
MAX. POND SIZE - WITHOUT FISH/SHADED	1800 GAL. (7000 L)
MAX. POND SIZE - WITH FISH/FULL SUN	900 GAL. (3500 L)
KINK-FREE HOSE LENGTH	16 ft (5 m)
KINK-FREE HOSE DIAMETER	3/4" (19 mm)
PRODUCT ORDER CODE	23CW018

PondMAX® UVC9W Water Clarifier

DESCRIPTION	UVC9W
NOMINAL LAMP POWER	9W
CORD LENGTH	16 ft (5 m)
PRODUCT ORDER CODE	23UV009

KIT INCLUDES:

- FILTER TANK
- TANK LID
- FINE FILTER SPONGE (BLUE)
- COARSE FILTER SPONGE (BLACK)
- BIO-SPHERE MEDIA
- SPRAY BAR
- OVERFLOW PIPE
- WATER PUMP (PondMAX® FP550)
- WATER CLARIFIER (PondMAX® UVC9W)
- KINK-FREE HOSE
- HOSE BARBS
- FITTING ACCESSORIES

PondMAX® FP550 Pump

DESCRIPTION	FP550
MAX. WATER FLOW (GPH)	550
MAX. WATER FLOW (LPH)	2100
MAX. HEAD LIFT	7.8 ft (2.38 m)
POWER CONSUMPTION (W)	47W
CORD LENGTH	32 ft (10 m)
PRODUCT ORDER CODE	22FP005

* SUBJECT TO VARIATION ACCORDING TO LOAD.

CLEAR WATER KIT



IMPORTANT SAFEGUARDS

Please read the operating instructions and familiarize yourself with the equipment before placing it in service. Correct and safe use of the equipment requires strict compliance with the safety instructions. For safety reasons persons less than 16 years of age or people that are not familiar with these instructions should not use this equipment.

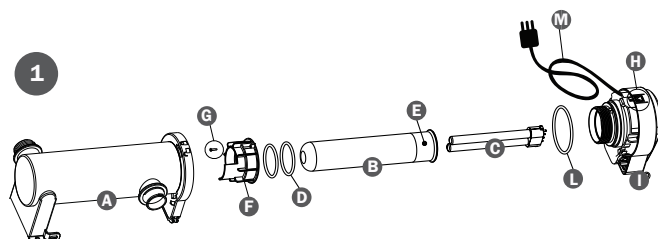
- **WARNING:** Both appliances (PondMAX® FP550 Pump and PondMAX® UVC9W Water Clarifier) cannot be used by children under 8 or persons with reduced physical, sensory or mental capabilities, or lack of experience and knowledge, unless they have been given supervision or instructions concerning use of the appliance in a safe way and understand the risks involved. Children shall not play with the appliance because this is not a toy. Cleaning and maintenance shall not be made by children without supervision. Children shall not play with the appliance because this is not a toy. Cleaning and maintenance shall not be made by children without supervision.
- **WARNING:** Disconnect all submerged electrical appliances in the pond before carrying out installation and maintenance operations. If the connection plug or the electric socket should be wet, disconnect the main switch before disconnecting the power supply cable.
- The power cord cannot be repaired. If it is damaged, the entire appliance must be discarded. Only for the PondMAX® UVC9W Water Clarifier it is possible to replace the power cord with a cord of the same kind. **BUT THIS OPERATION MUST BE PERFORMED BY QUALIFIED PERSONNEL ONLY.**
- These appliances must be supplied through a residual current device (RCD) having a rated residual current not exceeding 30mA (Idn ≤ 30 mA).
- **WARNING:** The PondMAX® UVC9W Water Clarifier contains an emitter with UVC9W rays, which may damage the eyes and skin. Improper use or damage to their protective casing may cause harmful UVC9W radiations. If clearly damaged, the appliances must not be used.
- **WARNING:** It is prohibited to use the UVC9W lamp on the outside of the appliance.
- Check that the voltage given on the appliance label corresponds to the mains voltage.
- Before connecting the appliance to the mains, check that the cable and the appliance are not damaged in any way.
- The appliance power supply cable must form an appropriate loop, facing downwards (Fig. 4, Page 7), to prevent any runoff water from coming into contact with the socket itself.
- Do not place the supply cable underground, but follow the installation instructions prescribed by the local regulations in force, and consult a qualified installer and electrician.
- When installing the appliance, do not use the supply cable to lift it.
- Before starting up the appliance, check that it has been correctly installed.
- Do not make any technical alterations to the appliance. Use only original spare parts and accessories.
- The maximum temperature for the circulating liquid must not exceed 95°F (35°C).
- **WARNING:** Avoid exposure to direct sunlight. Do not use or keep the appliance in an area subject to freezing. In winter, it is necessary to remove, empty and position the appliance so that it is protected.
- The appliances must not be operated dry. Do not use these appliances for filtering caustic, abrasive, inflammable, aggressive or explosive liquids, and even drinking water.
- **WARNING:** Never look directly at the UVC9W lamp when it is switched on.
- **WARNING:** The PondMAX® UVC9W Water Clarifier contains glass. Handle with care.
- **WARNING:** Never connect the filters to the public water supply network.
- **WARNING:** The PondMAX® UVC9W Water Clarifier must not operate immersed in water. If they should accidentally fall into it, before recovering them, disconnect the plugs from the power supply socket. Take the same care if you should notice that any parts of the appliance are wet.

EXPLODED VIEW



IMPORTANT

These accessories and attachments are recommended for use with your PondMAX product specified in this manual. The use of any other accessories or attachments might present a risk of injury to persons. Only use the accessory or attachment for its stated purpose.



1. UVC9W Water Clarifier

- A. Filter body
- B. Quartz tube
- C. UVC lamp
- D. O-ring(s) for quartz tube
- E. Aluminum retaining ring
- F. Clamp ring
- G. Safety screw
- H. Unlock button
- I. Filter head
- L. Filter head O-ring
- M. Cord

2. Screw nozzle of UV-C filter

3. O-ring for UV-C threaded coupling (models with UV-C)

4. Intermediate coupling for mounting of UV-C filter/spray bar (UV-C models)

5. Spray bar

6. Accessories for mounting UV-C filter/filter body

- 6a. Internal side of the filter box (screw, washer, O-ring)
- 6b. External side of the filter box (nut and washer)

7. Overflow pipe

8. Outlet adapter

9. O-ring for drain tube

10. FP550 Pump

11. Kink-free hose

12. Elbow (adaptor + screw ring + O-ring)

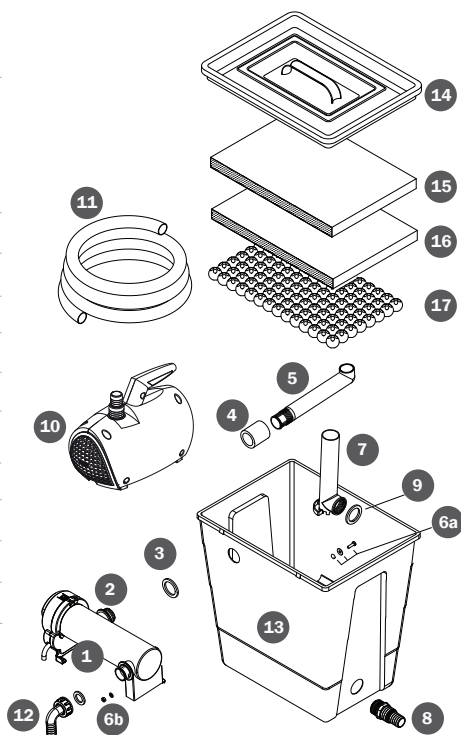
13. Filter tank

14. Filter tank lid

15. Fine sponge (blue)

16. Coarse sponge (black)

17. Bio-sphere media



CLEAR WATER KIT

INSTALLATION

WARNING:

- The PondMAX® CW1800 Clear Water Kit and PondMAX® UVC9W Water Clarifier must not be immersed into water (Fig. 5, Page 7).
- The PondMAX® UVC9W Water Clarifier cannot run dry, but must be connected to a pump.
- Prior to installation of PondMAX® UVC9W Water Clarifier, it is recommended to insert the UV-C lamp, included into the package, following the instructions on the lamp replacement.
- Proper functioning of the PondMAX® UVC9W Water Clarifier is demonstrated by blue light on the transparent adaptor. Otherwise, refer to TROUBLESHOOTING.

Overflow Pipe Assembling

1. Insert outlet adaptor into the hole at the base of PondMAX® CW1800 Clear Water Kit body.
2. Put the O-ring for the outlet adaptor on the connector thread, acting from the inner side of the filter body.
3. Bring the overflow pipe to the thread of the previously installed outlet adapter and, holding the overflow pipe, screw the outlet adaptor on until both elements are tightly fixed.

Sterilizer Assembling

WARNING: Prior to installation of PondMAX® UVC9W Water Clarifier, it is recommended to insert the UV-C lamp, included into the package, following the instructions on the lamp replacement.

1. Install the O-ring for the treaded coupling on the screw nozzle, located on the body of PondMAX® UVC9W Water Clarifier.
2. Insert the screw nozzle of PondMAX® UVC9W Water Clarifier into the corresponding opening located at the side of the PondMAX® CW1800 Clear Water Kit tank.
3. Acting from the internal side of the PondMAX® CW1800 Clear Water Kit tank, screw the intermediate coupling for mounting of PondMAX® UVC9W Water Clarifier/spray bar on the PondMAX® UVC9W Water Clarifier screw nozzle to the stop.
4. Screw the spray bar on the free end of the intermediate coupling for mounting of PondMAX® UVC9W Water Clarifier/spray bar, making sure that the bar openings face down.
5. Fix the PondMAX® UVC9W Water Clarifier with the accessories for mounting of PondMAX® UVC9W Water Clarifier/PondMAX® CW1800 Clear Water Kit tank. Act in the following order from the internal part of the filter box: screw, washer, O-ring. Act in the following order from the external part of the filter box: washer, nut.

Laying of Filtering Materials

1. Unpack the bio-sphere media (Exploded view 17, Page 4) from the package and place on the tank bottom, distributing them uniformly.
2. Place the sponges inside the filter box, so that their hole is located on the overflow pipe. For this purpose, act in the following order: coarse sponge, black (Exploded view 16, Page 4), fine sponge, blue (Exploded view 15, Page 4).
3. Close the box with the cover.

Assembling of Connecting Parts

WARNING:

- It is recommended to place the PondMAX® UVC9W Water Clarifier at the minimum distance of 6.5ft (2m) from the pond edge (Fig. 7-8, Page 7).
- Use kink-free hose, included into the package, for connection of pump with the PondMAX® UVC9W Water Clarifier, preliminary installed on the PondMAX® CW1800 Clear Water Kit tank. To ensure runoff of filtered water into the pond, it is necessary to use the kink-free hose with the required diameter, taking into account that 2 adaptors, included into the package, allow mounting of hoses with diameter 1" or 1-1/4" (25mm or 32mm) (Fig. 6, Page 7).

PondMAX® FP550 PUMP → PondMAX® UVC9W Water Clarifier:

1. Insert the elbow adaptor (Exploded view 12, Page 4) into the corresponding screw ring.
2. Connect the end of one of the 2 pieces of the kink-free hose (Exploded view 11, Page 4) to the pump outlet intended for immersion into the pond.
3. Connect the other end of the same kink-free hose to one of the two adaptors, previously cut and installed, pressing it until the hose sticks to the adaptor base. Fasten all components with a screw-clamp (not included).
4. Install a gasket into the adaptor nut, ensuring it sticks to the bottom of the same nut.
5. Screw the assembled adaptor to one of screw nozzles located on the UVC9W Water Clarifier filter body.

PondMAX® CW1800 Clear Water Kit → POND:

1. Cut off the drain tube (Exploded view 8, Page 4) depending on the diameter of the hose (Fig. 6, Page 7). Connect the end of the kink-free hose (Exploded view 11, Page 4) to the drain tube and fasten all components with a screw-clamp.
2. Immerse the free end of the kink-free hose into the pond.

Flow-through Filter Maintenance

TANK FILTER CLEANING

It is necessary to periodically inspect the interior of the box and, if necessary, clean the filter materials under running water to eliminate residue and grime that have accumulated. Do not use chemical detergents.

For this purpose, proceed as follows:

1. Open the PondMAX® CW1800 Clear Water Kit filter tank.
2. Take out the filtering materials and clean them, using only cold running water to prevent harm to microorganisms providing biological filtration.
3. Clean the internal compartment of the filter tank with a jet of water.
4. Put the filtering materials back in the filter tank, following instruction in LAYING OF FILTERING MATERIALS, depending on the filter model.

It is recommended to use only original spare parts, because thanks to the special materials these parts ensure safe and long-term performance of the filter.

MAINTENANCE & USE OF PUMP AND UV-C WATER CLARIFIER (INCLUDED IN KIT)

For complete assembly, maintenance and warranty information of the PondMAX® FP550 Pump and PondMAX® UVC9W Water Clarifier included in PondMAX® CW1800 Clear Water Kit, please refer to each individual Instruction Manual included with the kit.

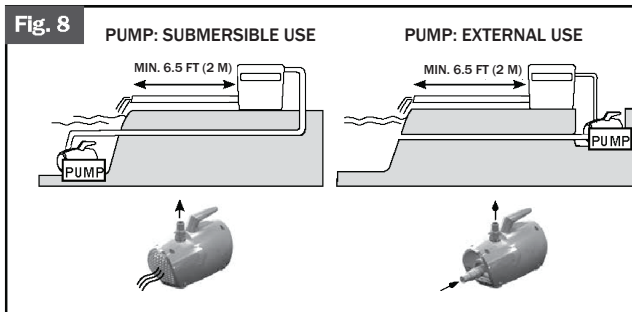
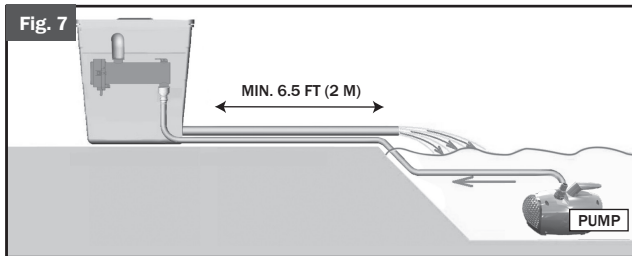
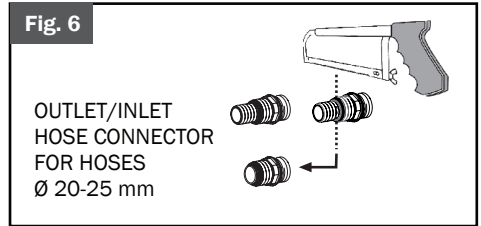
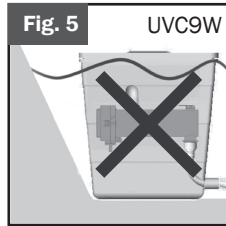
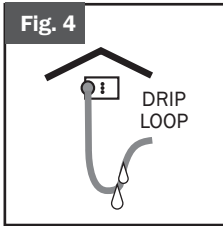
WARNING:

- The PondMAX® FP550 Pump can operate both immersed into the pond and outside the pond, provided that it is located in the ground lower than the water level in the pond and connected with it (Fig.8, Page 7).
- To switch the PondMAX® UVC9W Water Clarifier and pump off, simply disconnect the plugs from the sockets. Do not pull the power cord to avoid its possible damage.
- The PondMAX® UVC9W Water Clarifier is equipped with a protective device that automatically switches the lamp off if the filter head is accidentally opened without disconnecting it from the socket. It is recommended to pay close attention when performing maintenance, to avoid damages which may require replacement of the entire filter.
- First switch the pump off and then the PondMAX® UVC9W Water Clarifier, disconnecting the power cord plug from the socket.
- To ensure optimum performance of the filter, it is recommended to replace the lamp in the PondMAX® UVC9W Water Clarifier every 5000-6000 hours, which corresponds to utilization inside pond for one season.

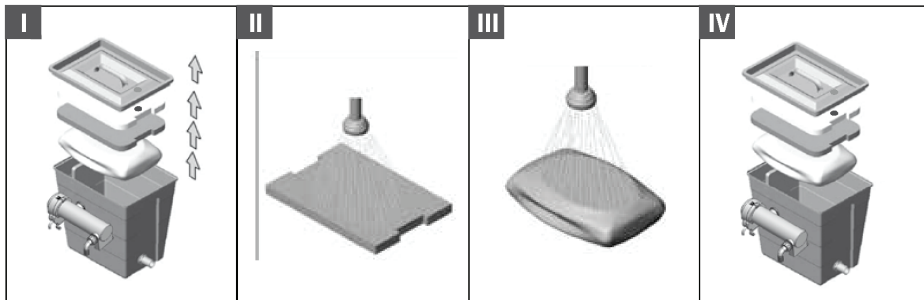
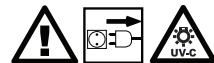
TROUBLESHOOTING

	Problem	Cause	Solution
FILTER TANK	The filtering capacity has decreased	The filtering materials were not placed in the proper order.	Check the order of placement of the filtering materials.
		The filtering materials are dirty.	Clean the filters.
		The pump malfunction	Replace the device.
FOR PondMAX® FP550 PUMP & PondMAX® UVC9W WATER CLARIFIER TROUBLESHOOTING, REFER TO RESPECTIVE INSTRUCTION MANUALS INCLUDED.			

CLEAR WATER KIT

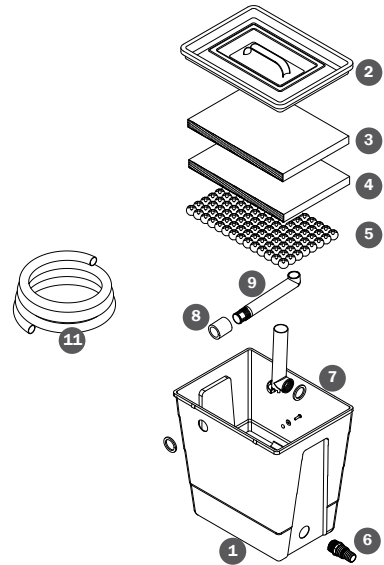


CW1800 CLEAR WATER KIT MAINTENANCE



REPLACEMENT PARTS

No.	PONDMAX® CW1800 CLEAR WATER KIT PARTS DESCRIPTION
1	Filter tank
2	Filter lid / cover
3	Fine filter sponge (blue)
4	Coarse filter sponge (black)
5	Bio-sphere media
6	Hose connector 1" (ø 32 - 25 mm)
7	Gasket for 1" joint 1" (ø 32 mm) - 4 pcs
8	Pipe coupling 1" (ø 32 mm)
9	Spray bar
10	Elbow at inlet 1" with internal thread for hose ø 20 mm
11	Kink-free hose



PONDMAX® UVC9W WATER CLARIFIER PARTS DESCRIPTION

REFER TO UVC WATER CLARIFIER INSTRUCTION MANUAL (INCLUDED)

PONDMAX® FP550 PUMP PARTS DESCRIPTION

REFER TO FP PUMP INSTRUCTION MANUAL (INCLUDED)

LIMITED WARRANTY

This product is warranted to the initial purchaser to be free of defects in materials and workmanship at the time of initial purchase. For PondMAX® FP550 Pump and PondMAX® UVC9W Water Clarifier warranty information, refer to each respective instruction manual included.

Please consult your dealer for quality original PondMAX replacement parts and Warranty support.
Visit www.pondmax.com for a dealer near you, or call us at 888.868.1185.