

# *PondMAX*

WATERGARDENING TO THE MAX™

## SF SERIES ALL-IN-ONE FILTER INSTRUCTION MANUAL



VERSION  
OCT 2022

**PondMAX USA**  
**888.868.1185**  
**[www.pondmax.com](http://www.pondmax.com)**

MODEL  
SF750  
SF1000

## WELCOME TO THE WORLD OF PONDMAX. YOU MADE THE RIGHT CHOICE INVESTING IN THIS QUALITY PRODUCT. THANK YOU AND ENJOY.

TECHNICAL SPECIFICATIONS	SF 750 All-In-One Filter	SF 1000 All-In-One Filter
Maximum Pond Size No Fish/Shaded	750 GAL. 2800 LITER	1000 GAL 3780 LITER
Maximum Pond Size Fish/Full Sun	375 GAL. 1400 LITER	500 GAL 1900 LITER
Maximum Pump Flow	660 GPH 2500 L/H	1000 GPH 3750 L/H
Maximum Pump Head	10 FT 3 M	10.5 FT 3.2 M
Power Consumption (W)	60	70
Volts (V)	120	120
Frequency (Hz)	60	60
Filter UVC (W)	9W	13W
Outlet Ø (INCH)	3/4" M	3/4" M
Cord Length	20 FT 6 M	20 FT 6 M
Item No.	23PF316	23PF319

### FEATURES

- Energy efficient pump
- Built in UVC clarifier with indicator light
- Large surface area filter pads for reduced maintenance
- Fountain nozzle options with telescopic riser and diverter
- Top suction grid with anti-clog design
- Top handle for carrying the filter or attaching a lanyard for easy retrieval of the filter



### IMPORTANT SAFEGUARDS

Please read the operating instructions and familiarize yourself with the equipment before placing it in service. Correct and safe use of the equipment requires strict compliance with the safety instructions. For safety reasons persons less than 16 years of age or people that are not familiar with these instructions should not use this equipment.

- The All-In-One filters have been designed according to national and international safety rules. Please read carefully the following instructions before using the All-In-One filters in order to avoid damages to persons/things.
- **WARNING:** always disconnect the power plug and any other appliances in the pond before touching the water, before any installation or maintenance and even when the appliances are not in use.
- **CAUTION:** The Ultraviolet rays might be dangerous. Never look directly and touch the UV-C Lamp when it is on. This can harm eyes and skin. To check the functioning of the lamp, use the UV-C light indicator.
- Never use the power cable to lift or move the appliance.
- Do not use the appliance if the power cable or plug are damaged. If the product is damaged it must be replaced by an authorized dealer.
- Keep children and disabled persons away from this appliance.
- The electrical supply must comply with electrical data written in the label of the product.
- If an extension cord is required, make sure it is waterproof.
- This product has been designed to work with water at a temperature between +4° C / +39,2° F and +35° C / 95° F.
- If the temperature drops below 0° C / 32° F, unplug the power and completely empty the filter. During winter it is better to remove the filter and store it in a sheltered place.
- Never operate the appliance without water.
- Never operate the appliance with liquids different from fresh water.
- Never connect the filter to the hydraulic system.

# ALL-IN-ONE FILTER

## FILTRATION TYPES

The All-in-One Filter is designed for easy and practical use in ponds. The filters have special foam pads that provide efficient mechanical filtration; a side foam with lower density to help catch coarse impurities and a large top foam with higher density to capture finer impurities. Special porous stone media, in addition to foams, promote biological filtration and help achieve and maintain clean water.

The All-in-One Filter also includes a built-in UVC Clarifier. The water inside the filter flows through the UVC chamber where the lamp treats the water. The UVC rays from the lamp aid water clarity.

## WINTER SEASON

The filter must be protected from freezing. During the winter season the filter should be turned off, emptied of all water, removed from the pond, and stored in a dry, sheltered place. It is recommended to leave the filter open during storage.

## PRODUCT COMPONENTS



### IMPORTANT

These accessories and attachments are recommended for use with your PondMAX product specified in this manual. The use of any other accessories or attachments might present a risk of injury to persons. Only use the accessory or attachment for its stated purpose.

## ASSEMBLY OF PRODUCT COMPONENTS



1 Place the UVC lamp in the filter cage.



2 Place the assembled Pump in the filter cage.



3 Place the Lid/Pump Cover on top of the pump.



4 Place the assembled telescopic tube and nozzle inside the opening in the Lid/Pump Cover, and screw clockwise to connect to the Pump.



5 Place the Zeolite Filter Media inside the filter cage, and place the top Filter Pad around the Nozzle and on top of the Pump and UVC lamp.



6 Place the Lid around the Nozzle and on top of the Filter Pad.

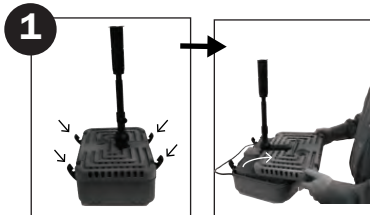


7 Close the Lid Clips.

## INSTALLATION

- Place the All-In-One filter at the bottom of the pond. Use a shim/riser underneath the filter if the telescopic tube, even at maximum extension, does not come out of the water.
- Level the All-In-One filter so the telescopic tube and fountain nozzle are straight, so the water flows vertically.
- Connect the power cable only after completing the filter installation. The cable powers both the pump and the UV-C lamp. Water flowing from the nozzle will indicate that the pump is working, and the bright blue light will indicate that the UV-C lamp is working.
- Never lift the filter with the power cord since this will damage the cord, the UV-C filter, or the pump.
- Lift the filter only by the handle in the lid. If necessary, hook a retrieval cord to the handle to facilitate removing the filter from the pond.

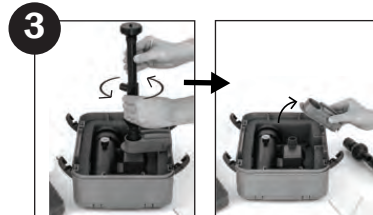
## FILTER MAINTENANCE



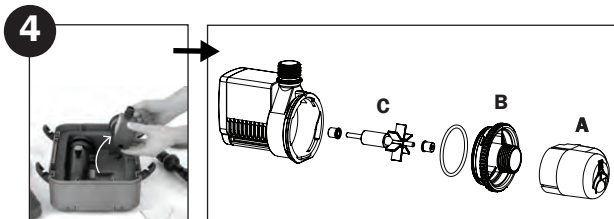
**1** Loosen the four hooks and remove the lid. It is not necessary to disconnect the telescopic tube and nozzle for cleaning the filter.



**2** Pull out the top and side foam from the filter cage to facilitate cleaning operations.



**3** For Filter's maintenance, first unscrew the telescopic tube and remove the lid from above the pump.



**4** Remove the pump. Once the pump is removed, unscrew the screw on the front. Slide off the pump intake adapter (A) and rotate the volute (B) counterclockwise to move it away from the pump body. Firmly pull the impeller (C) out of its housing (it has considerable magnetic attraction), taking care to perform the movement gently so as not to damage the internal components. Proceed with cleaning the rotor using a small brush, or mild soaps. Repeat the above steps in reverse order, taking care to reinsert the impeller into its housing. Attach the volute to the body by turning it clockwise. Thread on the pump intake adapter. Both should be oriented correctly on the side of the pump so that the safety screw can be screwed back in.

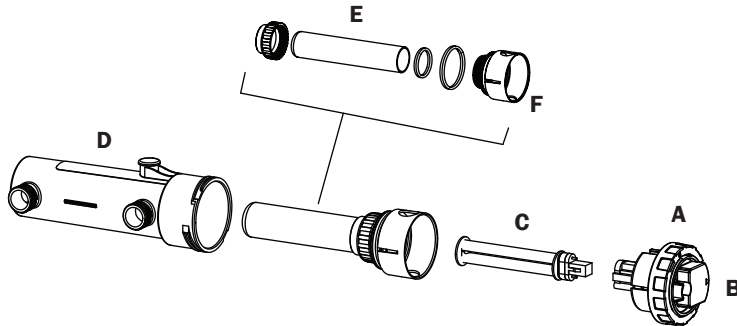


**5** To clean the UV-C filter or replace the lamp, first take it out of the base. Then refer to the 'UVC LAMP REPLACEMENT' instructions.

# ALL-IN-ONE FILTER

## UVC LAMP REPLACEMENT

To optimize the UVC clarification, it is recommended to change the UV-C lamp after approx. 8000 hours of operation or once per year.



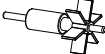




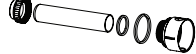
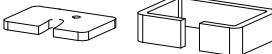




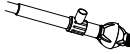





1. Disconnect the power cord from the electrical outlet.
2. Turn the outer ring nut (A) counterclockwise until it stops. The head (B) of the transformer rises a few millimeters and is thus easily removed from the housing (D).
3. Release the lamp (C) from its socket by pulling it gently.
4. Reinstall the new lamp in the same manner.
5. Insert the head (B) back into the filter-there is only one position for the head to enter the filter.
6. Turn the ring nut (A) clockwise to complete the operation.

## CLEANING THE QUARTZ SLEEVE

7. To clean the quartz tube, after step 1 above, pull out the assembly (E) & (F) through the two appropriate openings or by using a screwdriver. Clean the outside of the quartz sleeve (E) with a soft cloth and vinegar.
8. Insert the assembly (E) & (F) back into the housing (D) -there is only one position for the assembly to enter the housing so line up the notch.
9. Resume reassembly from step 4.

Notice: A safety system turns off the lamp, in case the power has not been turned off, to prevent exposure to UV-C rays during maintenance.

## REPLACEMENT PARTS: (NOTE: THESE ARE THE MOST USED)

ITEM NO.	DESCRIPTION	IMAGE
31PF101	Replacement Pump Impeller	
31PF102	Replacement Volute	
31PF103	Replacement Pump and UV Ballast Assembly for SF750	
31PF104	Replacement Pump and UV Ballast Assembly for SF1000	
31PF105	Replacement Pump Intake Adapter	
31PF106	Replacement Quartz Sleeve Assembly	
31PF107	Replacement Filter Pad Set	
31PF108	Replacement Zeolite Filter Media	
31PF109	Replacement Lid	
31PF110	Replacement Lid Clip Set (x4)	
31PF111	Replacement Filter Body	
31PF112	Replacement Plumbing Adapters	
31PF113	Replacement Fountain Nozzle Set	
31PF114	Extra Foam Jet Fountain Nozzle	
31PF115	Extra 3-Tier Fountain Nozzle	
31PS331	Replacement 9W UV lamp	
31PS283	Replacement 13W UV lamp	

# ALL-IN-ONE FILTER

## LIMITED PRODUCT WARRANTY

- CMT Group LLC, a California limited liability company d/b/a PondMAX™ USA (the "Company") expressly warrants to the original purchaser that, for a period of two (2) years from the date of sale, the covered product (the "Product") will be reasonably free of defects in materials and workmanship and that when properly handled, will conform, with accepted tolerance to applicable manufacturing specifications. This Limited Product Warranty ("Limited Warranty") only applies to Company's Products that are used, stored, handled, and installed in the manner recommended by the Company in the Product instruction manual.
- Notwithstanding this Limited Warranty, customer acknowledges that some parts of the Product are consumable and may need to be replaced as part of ongoing Product maintenance, as recommended in the Product instruction manual, and are therefore not covered by this Limited Warranty.
- Company will, at its option, repair or replace Product without charge, if the Product fails or does perform as warranted solely due to a manufacturing defect within the warranty period, subject to the exclusions set forth in this Limited Warranty.
- Repair or replacement during this two (2) year warranty shall not include: reasonable labor charges necessary to repair or replace the defective Product, shipping costs, and packing and insurance costs. During the entire two (2) year warranty, Company's obligation as to repair or replacement shall further be limited to repair or replacement with the models of the Product that are available at the time of the repair or replacement, and shall be limited to the repair or replacement of only the specific Product that fails due to a manufacturing defect. Any repaired or replaced Product shall also remain subject to the original two (2) year warranty from the date of the original sale, and any repair or replacement shall not extend the original warranty period in any manner or start a new warranty period.
- You may obtain coverage under this Limited Warranty by providing Company with proof of original purchase. For service under this Limited Warranty, you must first contact the seller, distributor, retailer, or dealer from whom you purchased the Product and provide the following: copy of original receipt, your name and address, a description of the Product (including the serial number/date code set forth on the Product), and the nature of the defect. To expedite any warranty claims and processing, please submit to us the product registration card included with your purchased Product promptly after your purchase.
- All warranty repairs must be performed by the Company, or a Company authorized third-party. Any repairs performed by you or an unauthorized third-party will not be compensated by Company and are not the responsibility of the Company and will void this warranty.
- **DISCLAIMER OF WARRANTIES:** Company's Products must be stored, handled, installed, used, and maintained in accordance with instructions provided by Company, and this Limited Warranty is conditioned upon compliance with all such instructions. Copies of the Company's use guide/care guide are included with the Product and available from the Company at the address listed below. You may also obtain these materials by contacting Company at (888) 868-1185 or on the Company's website [www.pondmax.com](http://www.pondmax.com).
- This Limited Warranty does not cover defects caused by:
  - non-compliance with Company's use guides, care guides, and/or instruction manual. Such failures include, but are not limited to, exposure to physical abuse, including, but not limited to chemical abuse (e.g. harsh cleansers and solvents), thermal abuse or shock (e.g. excessive heat or cold), incompatibility of fluid used near the Product, or misuse;
  - improper storage, installation, handling, and/or use of the Product;
  - damage not resulting from manufacturing defects that occur while the Product is in the customer's possession;
  - unreasonable or unintended use of Product;
  - products installed with known or visible manufacturing defects at the time of installation;
  - minor conditions such as stains, scratches, etc.
- Any information or suggestion by Company with respect to the Products concerning applications, specifications, or compliance with codes and standards is provided solely for your convenient reference and are made without any representation as to accuracy or suitability. You must verify and test the suitability of any information with respect to the Products for your specific application.
- **THE WARRANTIES SET FORTH IN THIS LIMITED WARRANTY ARE THE ONLY WARRANTIES MADE BY COMPANY IN CONNECTION WITH THE PRODUCT. COMPANY CAN NOT AND DOES NOT MAKE ANY IMPLIED OR EXPRESS WARRANTIES WITH RESPECT TO THE PRODUCT, AND DISCLAIMS ALL OTHER WARRANTIES, INCLUDING, BUT NOT LIMITED TO, ANY WARRANTY OF MERCHANTABILITY OR FITNESS FOR A PARTICULAR PURPOSE. PRODUCTS SOLD BY COMPANY ARE SOLD ONLY TO THE SPECIFICATIONS SPECIFICALLY SET FORTH BY COMPANY IN WRITING. OTHER THAN THE LIMITED WARRANTY SET FORTH HEREIN, COMPANY MAKES NO OTHER WARRANTIES, EXPRESS OR IMPLIED. COMPANY'S SOLE OBLIGATION UNDER THIS WARRANTY SHALL BE REPAIR OR REPLACEMENT OF NON-CONFORMING PRODUCTS. BUYER ASSUMES ALL RISK WHATSOEVER AS TO THE RESULT OF THE USE OF THE PRODUCTS PURCHASED, WHETHER USED SINGULARLY OR IN COMBINATION WITH ANY OTHER PRODUCTS OR SUBSTANCES.**
- **LIMITATION OF LIABILITY:** No claim by the buyer/owner of any kind, including claims for indemnification, shall be greater in amount than the purchase price of the Product in respect to which damages are claimed. IN NO EVENT SHALL COMPANY BE LIABLE TO BUYER/OWNER IN TORT, CONTRACT OR OTHERWISE, FOR ANY SPECIAL, INDIRECT, INCIDENTAL, CONSEQUENTIAL, RELIANCE, STATUTORY, SPECIAL, PUNITIVE OR EXEMPLARY DAMAGES, INCLUDING, BUT NOT LIMITED TO, LOST PROFITS, LOSS OF USE, LOSS OF TIME, LOSS OF REVENUES, INCONVENIENCE, LOSS BUSINESS OPPORTUNITIES, DAMAGE TO GOOD WILL OR REPUTATION, OR LOSS OF DATA, EVEN IF ADVISED OF THE POSSIBILITY OF SUCH DAMAGES OR SUCH DAMAGES COULD HAVE BEEN REASONABLY FORESEEN, IN CONNECTION WITH, ARISING OUT OF, OR AS A RESULT OF, THE SALE, DELIVERY, SERVICING, USE OR LOSS OF USE OF THE PRODUCT SOLD HEREUNDER, OR FOR ANY LIABILITY OF BUYER TO ANY THIRD PARTY WITH RESPECT THERETO.
- All provisions of this Limited Warranty are severable and if any provision shall be deemed invalid, the remaining provisions shall remain in full force and effect.
- Please consult your retailer for quality original Company replacement parts.
- Visit [www.pondmax.com](http://www.pondmax.com) for your nearest dealer.
- **Contact Information:**
  - Any question concerning this warranty should be addressed to:  
PondMAX USA  
P.O. Box, 341  
San Leandro, CA 94577  
Phone: 888.868.1185  
Email: [info@pondmax.com](mailto:info@pondmax.com)  
Website address: <https://pondmax.com>